

5621

Booklet Sl. No. :

Booklet Series

A**S-02**

TEACHERS RECRUITMENT BOARD, CHENNAI - 6
Written Competitive Examination for
Recruitment of BRTE in SSA (2008 - 2009)

ENGLISH

Time Allowed : 3 Hours]

[Total Marks : 150

Each question carries four options namely A, B, C and D. Choose one correct option and mark in appropriate place in the OMR Answer Sheet.

1. Who was the Viceroy of India, when the Rowlatt Act was passed ?
A) Lord Irwin
B) Lord Chelmsford
C) Lord Wavell
D) Lord Wellington.
2. Which one of the following is the softest ?
A) Sodium
B) Aluminium
C) Iron
D) Lithium.
3. As a non-member who can participate in the proceedings of either of House of Parliament ?
A) Vice-President
B) Chief Justice
C) Attorney General
D) Chief Election Commissioner.
4. Which is the river on which Indira Sagar Dam is planned to be constructed ?
A) Mahanadi
B) Godavari
C) Krishna
D) Narmada.
5. The first astronomer who gave the idea, 'The earth rotates on its axis', is
A) Bhaskara
B) Aryabhata
C) Varahamihira
D) Kalpana Chawla.

23. A menagerie is
- A) a collection of artefacts B) a collection of animals for display
C) a collection of glassware D) a man's wardrobe.
24. Which of the following statements is true ?
- A) A Pidgin is formed by the mixture of two or more languages. When a Pidgin acquires native speakers it is a Creole
B) Pidgin is spoken, Creole is written
C) Pidgin has more of English, Creole has less
D) Pidginization and Creolization are different and unrelated processes.
25. Macbeth murdered Duncan
- A) at the dinner table B) in his sleep
C) by poisoning him D) in a duel.
26. Shakespeare's Last Plays are characterized by the theme of
- A) Reconciliation B) Divine retribution
C) Youthful love D) War.
27. Which of the following is a 'minimal pair' ?
- A) Radio, rafter B) Level, label
C) Canteen, cancer D) Pin, bin.
28. The lexical set, 'chair, seat and settee' illustrate a phenomenon known as
- A) enjambment B) collocation
C) versification D) morphology.
29. On the Elizabethan stage, Juliet's gallery for the play *Romeo and Juliet* was located on the
- A) Back stage B) Inner stage
C) Upper stage D) Front stage.
30. Identify the expression that distinguishes between wit and humour.
- A) Wit is intellectual, humour is not
B) Wit is poetic, humour is prosaic
C) Wit is aggressive, humour is passive
D) Wit is purely verbal, but humour applies to speech as well as behaviour.

42. Which of the following characters of *The Tempest* can be viewed as 'colonized subjects' ?
- A) Ferdinand and Miranda B) Ariel and Caliban
C) Prospero and Miranda D) Gonzalo and Stephano.
43. The words 'bang' and 'click' illustrate
- A) elision B) onomatopoeia
C) assonance D) alliteration.
44. Who earned the reputation of being Britain's war Prime Minister ?
- A) Benjamin Disraeli B) John Major
C) Margaret Thatcher D) Sir Winston Churchill.
45. In Vijay Tendulkar's *Silence : The Court Is In Session*, the undertrial is a
- A) Doctor B) Teacher
C) Catholic Priest D) Salesman.
46. An elegy
- A) describes a grand occasion
B) celebrates a person's achievements
C) laments the death of a person
D) praises a ruler.
47. "You taught me language and my profit on it is I know how to curse." These profound words were said by
- A) Caliban to Gonzalo B) Ariel to Prospero
C) Caliban to Ferdinand D) Caliban to Prospero.
48. Who speaks the words, "Eat it a little more... Eat it well. Eat it so that the point of the hook goes into your heart and kills you..." ?
- A) Dimmensdale B) Santiago
C) Willy Loman D) Linda Loman.
49. In 'Shooting an Elephant' the narrator decides to shoot the elephant because
- A) a white man mustn't be frightened in front of 'natives'
B) his boss expected him to shoot the elephant
C) the elephant carried an infectious disease
D) the elephant was too old to be of service.
50. The 'dream children' of Lamb's essay are
- A) Allen and Jenny B) Alice and John
C) Alice and James D) Andrew and Joan.

59. In her poem 'Punishment in Kindergarten' Kamala Das conveys the idea that
- A) criticism hurts a child deeply
 - B) criticism is an effective tool for correction
 - C) corporal punishment is wrong
 - D) corporal punishment is sometimes necessary.
60. In the poem, 'The Queen's Rival', Sarojini Naidu reveals the 'rival' to be
- A) the step-daughter of the Queen
 - B) the mistress of the king
 - C) the little princess
 - D) the wife of the king's brother.
61. The poet's deepest 'wish' in the poem *Wants* is
- A) 'the wish to be alone'
 - B) 'the wish to be with God'
 - C) 'the wish to love and be loved'
 - D) 'the wish for a lifetime of learning'.
62. The 'Porter' in *Macbeth* claims that he will
- A) defy
 - B) steal
 - C) equivocate
 - D) accuse.
63. When Wordsworth exclaimed, "Bliss it was in that dawn to be alive. But to be Young was heaven" he was referring to
- A) The Reformation
 - B) The French Revolution
 - C) The Crusades
 - D) The Puritan War.
64. To the writer the English language owes the word 'utopia' which means 'ideal world'.
- A) Roger Ascham
 - B) Latimer
 - C) Thomas More
 - D) Erasmus.
65. Slapstick humour is characteristic of
- A) dark comedy
 - B) high comedy
 - C) low comedy
 - D) comedy of humours.

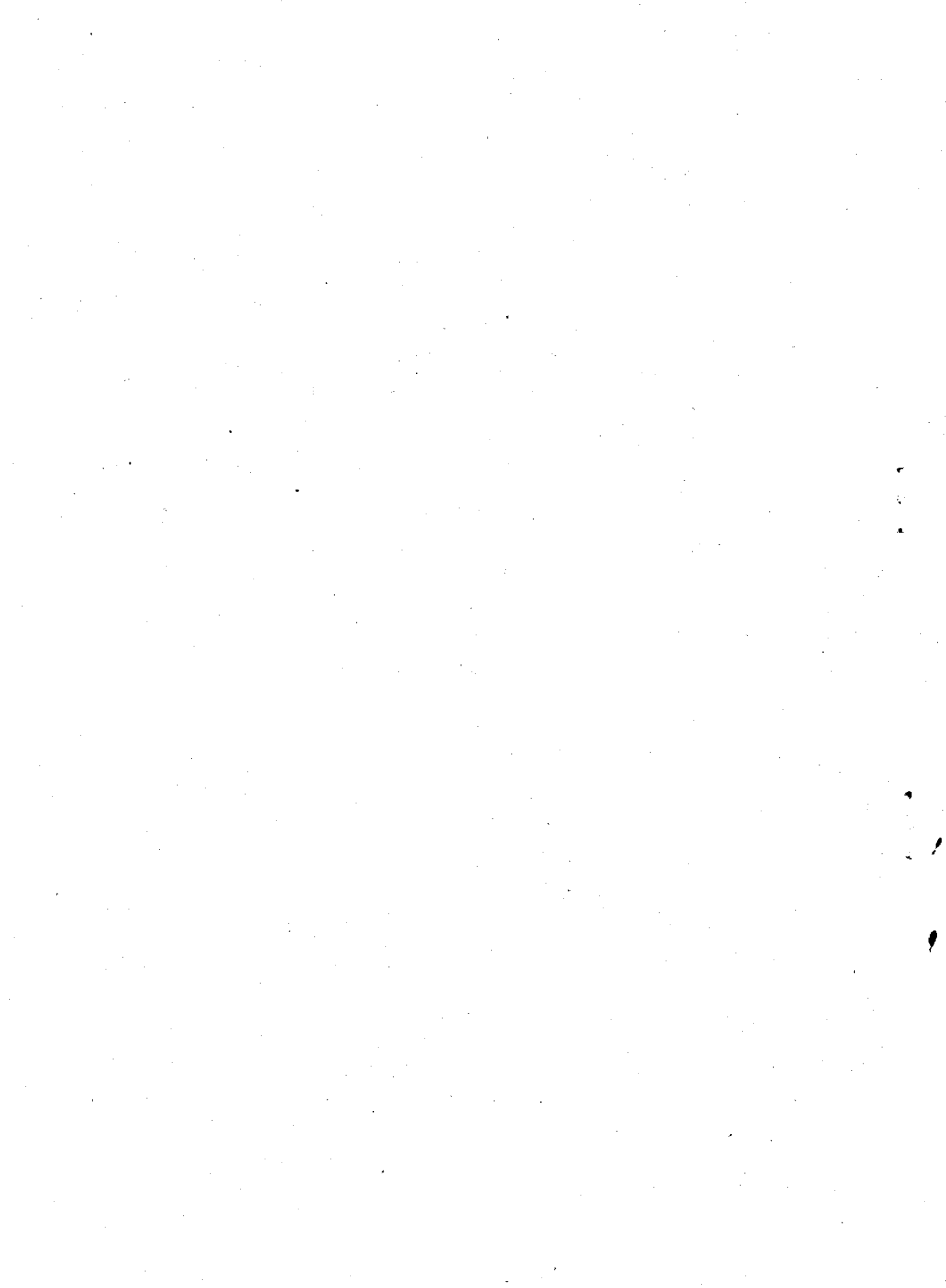
80. The battle of Wandiwash was fought between
- A) Marathas and Portuguese B) the English and the French
C) the English and Portuguese D) Marathas and the English.
81. Linear programming is designed by
- A) B. F. Skinner B) E. L. Thorndike
C) L. P. Pavlov D) Clark L. Hull.
82. Which of the following first identified the Secondary Education as a weak link and suggested improvement ?
- A) The Tarachand Committee (1948)
B) The Secondary Education Commission (1954)
C) The University Education Commission (1949)
D) The Education Commission (1966).
83. Intelligence test scores are reasonably stable after the age of
- A) one B) two
C) five D) twenty.
84. Which one is not an S-R theory with reinforcement ?
- A) E. L. Thorndike's theory
B) Hull's theory
C) B. F. Skinner's theory
D) Tolman's theory of learning.
85. The emphasis of National Board for Adult Education on Curriculum is that it must be
- A) need-based B) functional
C) job-oriented D) production-oriented.
86. World First Aid Day is
- A) September 11 B) September 12
C) September 10 D) September 9.

102. The 'aside' is a dramatic device that reveals the inner thoughts of a character. It differs from a soliloquy in that
- A) the character plots evil
 - B) the character speaks from back stage
 - C) the character is not alone on stage (by convention he is inaudible to the other characters)
 - D) the character speaks to a group of people.
103. How is the /p/ in 'pant' described ?
- A) Voiceless, bilabial, stop
 - B) Voiced, bilabial, stop
 - C) Voiceless, bilabial, lateral
 - D) Voiced, labiodental, lateral.
104. Identify the word which has the diphthong /aɪ/.
- A) Same
 - B) Pie
 - C) Alter
 - D) Camp.
105. When the true identity of Burchell is disclosed he is
- A) Sir Wilmot
 - B) Squire Thornhill
 - C) The Vicar of Wakefield
 - D) Sir William Thornhill.
106. The 'Twelfth Night' in Shakespeare's England was
- A) the twelfth night after Easter
 - B) the sacred number twelve
 - C) the twelfth night after Christmas
 - D) Halloween.
107. The impressive opening statement, "I heartily accept the motto — That government is best that governs the least" was made by
- A) Martin Luther King
 - B) Thoreau
 - C) Mahatma Gandhi
 - D) Jawaharlal Nehru.
108. Hayavadana is presented in the tradition.
- A) Talmaddale
 - B) Kathaprasangam
 - C) Tamasha
 - D) Yakshagana.
109. Which of the following statements is true about The Movement Poets ?
- A) They had a strong Christian element in their poetry
 - B) They created a new metrical form
 - C) They celebrated relationships
 - D) They addressed everyday British life in plain straightforward language.

110. "Oh I have suffered with those that I saw suffer" is an utterance by
A) Viola in Twelfth Night B) Miranda in The Tempest
C) Lady Macbeth D) Olivia in Twelfth Night.
111. Jethro Tull and 'Turnip' Townsend are enduring figures in the history of the
A) Reform Bills B) Industrial Revolution
C) Agricultural Revolution D) Labour Movement.
112. The tragedy of The Great Plague that struck London in 1645 was followed by
A) The Great Epidemic B) The Great Depression
C) The Great Deluge D) The Great Fire.
113. 'Lyre' the root-word for the term 'lyric' refers to
A) the wind B) a liar
C) a soothing balm D) a musical instrument.
114. The ode was an apt vehicle of expression for the Romantic poets because it provided for
A) lyricism and passionate meditation B) brevity
C) a fixed rhyme scheme D) terseness.
115. In the Philosophy of Composition, Poe discusses poetics with reference to
A) 'The Road Not Taken' B) 'The Lucy Poems'
C) 'The Raven' D) 'Songs of Innocence'.
116. Premchand's 'chess players' are a literary device to depict the
A) the subversive strategies of the king's men
B) the intelligence of the king's courtiers
C) court intrigue
D) the irony in the take-over of the kingdom.
117. "In India, English is the language spoken by the ruling class. It is spoken by higher class natives at the seat of government... Whether we look at the intrinsic value of our literature, or at the particular situation of this country, we shall see the strongest reason to think, that of all the foreign tongues, the English tongue is that which is the most suitable to our native subjects." Who expressed these views ?
A) Lord Macaulay B) Lord Cornwallis
C) Lord Lytton D) Lord Mountbatten.

118. plays an important role in the comedy *The School For Scandal*.
A) Satire B) Farce
C) Intrigue D) Wit and repartee.
119. The sonnet is a literary form that originated in
A) Italy B) Greece
C) France D) England.
120. The unpronounced 'b' exists in 'debt' and 'doubt' because they are derived from the words 'debitum' and 'dubitum'.
A) German B) French
C) Dutch D) Latin.
121. The Great Depression happened in the year
A) 1940 B) 1930
C) 1929 D) 1941.
122. The play *Chandalika* deals with the question of
A) Untouchability B) Widow-remarriage
C) Sati D) Dowry.
123. The film adaptation of Shaw's *Pygmalion* is
A) *The Rain in Spain* B) *Mind Your Language*
C) *To Sir, With Love* D) *My Fair Lady*.
124. Falstaff, the companion to Prince Hal appears in 3 plays.
A) Henry IV Part 1, Part 2 and Henry V
B) Richard II, Henry IV Part 1 and Part 2
C) Henry IV Part 1, Henry IV Part 2 and *Merry Wives of Windsor*
D) Richard II, Richard III and Henry IV Part 1.
125. Who among the following are Lytton Strachey's 'Eminent Victorians' ?
A) Tennyson, Darwin
B) John Stuart Mill, Adam Smith
C) Robert Browning, Elizabeth Barrett Browning
D) Florence Nightingale, Dr. Arnold.
126. The Movement Poets in England belonged to the
A) 1940s B) 1930s
C) 1950s D) 1920s.
127. in *Gulliver's Travels* represent the European race.
A) The Lilliputians B) The Houyhnhnms
C) The Yahoos D) The Laputians.

143. Middle English evolved over the years as and mingled.
- A) French, German B) English, German
C) Anglo-Saxon, German D) Anglo-Saxon, French.
144. The pioneers of the sonnet in English are
- A) Shakespeare and Milton B) Thomas More and Erasmus
C) Wyatt and Surrey D) Shakespeare and Marlowe.
145. The character who is made to appear ridiculous in yellow stockings is
- A) Sir Andrew B) Malvolio
C) Sir Toby D) Cesario.
146. In Steven's 'Anecdote on the Jar', the Jar represents
- A) God B) Nature
C) Man D) Evil.
147. The immediate ancestor of 'Modern English' is
- A) Middle English B) Old English
C) Anglo-Saxon D) Old German.
148. The term best describes the social structure of Medieval England.
- A) theocracy B) oligarchy
C) monarchy D) feudalism.
149. "A quibble was to him the fatal Cleopatra for which he lost the world and was content to lose it." Who made this observation of Shakespeare's works ?
- A) Dryden B) Johnson
C) Matthew Arnold D) Malcolm Bradbury.
150. Which of the following plays is about the devastating impact of 'the American dream' on 'the common man' ?
- A) Driving Miss Daisy B) Hairy Ape
C) Death of a Salesman D) The Glass Menagerie.



KEY-X02A.TXT
TEACHERS RECRUITMENT BOARD, CHENNAI-6. X02 (ENGLISH)

BOOKLET => A

1	2	3	4	5	6	7	8	9	10
B	A	C	D	B	C	A	A	B	C
11	12	13	14	15	16	17	18	19	20
A	A	B	D	C	A	D	D	B	C
21	22	23	24	25	26	27	28	29	30
A	B	B	A	B	A	D	B	C	D
31	32	33	34	35	36	37	38	39	40
B	A	A	C	A	C	B	A	C	B
41	42	43	44	45	46	47	48	49	50
A	B	B	D	B	C	D	B	A	B
51	52	53	54	55	56	57	58	59	60
B	A	B	A	C	B	C	D	A	C
61	62	63	64	65	66	67	68	69	70
A	C	B	C	C	B	B	A	A	B
71	72	73	74	75	76	77	78	79	80
A	B	D	C	A	D	D	B	D	B
81	82	83	84	85	86	87	88	89	90
A	C	D	D	A	*	A	C	C	B
91	92	93	94	95	96	97	98	99	100
A	A	C	A	B	B	C	D	C	D
101	102	103	104	105	106	107	108	109	110
A	C	A	B	D	C	B	D	D	B
111	112	113	114	115	116	117	118	119	120
C	D	D	A	C	D	A	C	A	D
121	122	123	124	125	126	127	128	129	130
C	A	D	C	D	C	C	D	B	D
131	132	133	134	135	136	137	138	139	140
B	A	A	B	B	B	D	D	D	A
141	142	143	144	145	146	147	148	149	150
C	D	D	C	B	C	A	D	B	C

Checked By 1.
Checked By 2.♀