

## IN : INSTRUMENTATION ENGINEERING

Duration: Three Hours

Maximum Marks: 100

Read the following instructions carefully.

1. Write your name and registration number in the space provided at the bottom of this page.
2. Take out the **Optical Response Sheet (ORS)** from this Question Booklet **without breaking the seal**.
3. Do not open the seal of the Question Booklet until you are asked to do so by the invigilator.
4. Write your registration number, your name and name of the examination centre at the specified locations on the right half of the **ORS**. Also, using HB pencil, darken the appropriate bubble under each digit of your registration number and the letters corresponding to your test paper code (IN).
5. This Question Booklet contains **20** pages including blank pages for rough work. After opening the seal at the specified time, please check all pages and report discrepancy, if any.
6. There are a total of 65 questions carrying 100 marks. All these questions are of objective type. Questions must be answered on the left hand side of the **ORS** by darkening the appropriate bubble (marked A, B, C, D) using HB pencil against the question number. **For each question darken the bubble of the correct answer.** In case you wish to change an answer, erase the old answer completely. More than one answer bubbled against a question will be treated as an incorrect response.
7. Questions Q.1 – Q.25 carry 1-mark each, and questions Q.26 – Q.55 carry 2-marks each.
8. Questions Q.48 – Q.51 (2 pairs) are common data questions and question pairs (Q.52, Q.53) and (Q.54, Q.55) are linked answer questions. The answer to the second question of the linked answer questions depends on the answer to the first question of the pair. If the first question in the linked pair is wrongly answered or is un-attempted, then the answer to the second question in the pair will not be evaluated.
9. Questions Q.56 – Q.65 belong to General Aptitude (GA). Questions Q.56 – Q.60 carry 1-mark each, and questions Q.61 – Q.65 carry 2-marks each. The GA questions begin on a fresh page starting from page 13.
10. Un-attempted questions will result in zero mark and wrong answers will result in **NEGATIVE** marks. For Q.1 – Q.25 and Q.56 – Q.60,  $\frac{1}{2}$  mark will be deducted for each wrong answer. For Q.26 – Q.51 and Q.61 – Q.65,  $\frac{2}{3}$  mark will be deducted for each wrong answer. The question pairs (Q.52, Q.53), and (Q.54, Q.55) are questions with linked answers. There will be negative marks only for wrong answer to the first question of the linked answer question pair, i.e. for Q.52 and Q.54,  $\frac{2}{3}$  mark will be deducted for each wrong answer. There is no negative marking for Q.53 and Q.55.
11. Calculator is allowed whereas charts, graph sheets or tables are **NOT** allowed in the examination hall.
12. Rough work can be done on the question paper itself. Additionally, blank pages are provided at the end of the question paper for rough work.

Name							
Registration Number	IN						

**Q. 1 – Q. 25 carry one mark each.**

Q.1 The matrix  $M = \begin{bmatrix} -2 & 2 & -3 \\ 2 & 1 & -6 \\ -1 & -2 & 0 \end{bmatrix}$  has eigenvalues  $-3, -3, 5$ . An eigenvector corresponding to the eigenvalue 5 is  $[1 \ 2 \ -1]^T$ . One of the eigenvectors of the matrix  $M^3$  is

- (A)  $[1 \ 8 \ -1]^T$       (B)  $[1 \ 2 \ -1]^T$       (C)  $[1 \ \sqrt[3]{2} \ -1]^T$       (D)  $[1 \ 1 \ -1]^T$

Q.2 The contour integral

$$\oint_C e^{1/z} dz$$

with  $C$  as the counter-clockwise unit circle in the  $z$ -plane is equal to

- (A) 0      (B)  $2\pi$       (C)  $2\pi\sqrt{-1}$       (D)  $\infty$

Q.3 Consider the signal

$$x(t) = \begin{cases} e^{-t}, & t \geq 0 \\ 0, & t < 0 \end{cases}$$

Let  $X(\omega)$  denote the Fourier transform of this signal. The integral

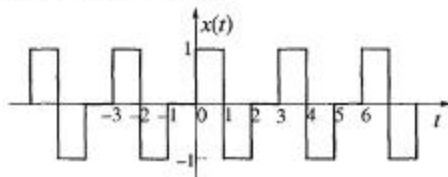
$$\frac{1}{2\pi} \int_{-\infty}^{\infty} X(\omega) d\omega$$
 is

- (A) 0      (B) 1/2      (C) 1      (D)  $\infty$

Q.4 The continuous-time signal  $x(t) = \sin \omega_0 t$  is a periodic signal. However, for its discrete-time counterpart  $x[n] = \sin \omega_0 n$  to be periodic, the necessary condition is

- (A)  $0 \leq \omega_0 < 2\pi$       (B)  $\frac{2\pi}{\omega_0}$  to be an integer  
 (C)  $\frac{2\pi}{\omega_0}$  to be a ratio of integers      (D) none

Q.5 Consider a periodic signal  $x(t)$  as shown below



It has a Fourier series representation  $x(t) = \sum_{k=-\infty}^{\infty} a_k e^{j(2\pi/T)kt}$

Which one of the following statements is **TRUE**?

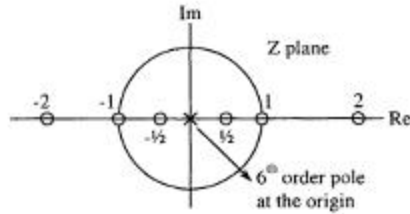
- (A)  $a_k = 0$ , for  $k$  odd integer and  $T = 3$       (B)  $a_k = 0$ , for  $k$  even integer and  $T = 3$   
 (C)  $a_k = 0$ , for  $k$  even integer and  $T = 6$       (D)  $a_k = 0$ , for  $k$  odd integer and  $T = 6$

Q.6 The integral

$$\frac{1}{\sqrt{2\pi}} \int_{-\infty}^{\infty} t^2 e^{-t^2/2} \delta(1-2t) dt \text{ is equal to}$$

- (A)  $\frac{1}{8\sqrt{2\pi}} e^{-1/8}$       (B)  $\frac{1}{4\sqrt{2\pi}} e^{-1/8}$       (C)  $\frac{1}{\sqrt{2\pi}} e^{-1/2}$       (D) 1

Q.7 Shown below is the pole-zero plot of a digital filter



Which one of the following statements is **TRUE**?

- (A) This is a low pass filter      (B) This is a high pass filter  
(C) This is an IIR filter      (D) This is an FIR filter
- Q.8 The continuous time signal  $x(t) = \cos(100\pi t) + \sin(300\pi t)$  is sampled at the rate 100 Hz to get the signal

$$x_s(t) = \sum_{n=-\infty}^{\infty} x(nT_s) \delta(t - nT_s), \quad T_s = \text{sampling period}$$

The signal  $x_s(t)$  is passed through an ideal low pass filter with cutoff frequency 100 Hz. The output of the filter is proportional to

- (A)  $\cos(100\pi t)$       (B)  $\cos(100\pi t) + \sin(100\pi t)$   
(C)  $\cos(100\pi t) - \sin(100\pi t)$       (D)  $\sin(100\pi t)$
- Q.9 Consider a system with input  $x(t)$  and output  $y(t)$  related as follows

$$y(t) = \frac{d}{dt} \left\{ e^{-t} x(t) \right\}$$

Which one of the following statements is **TRUE**?

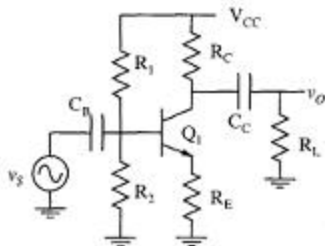
- (A) The system is nonlinear      (B) The system is time-invariant  
(C) The system is stable      (D) The system has memory
- Q.10 The first two rows of Routh's table of a third-order characteristic equation are

$$\begin{array}{ccc} s^3 & 3 & 3 \\ s^2 & 4 & 4 \end{array}$$

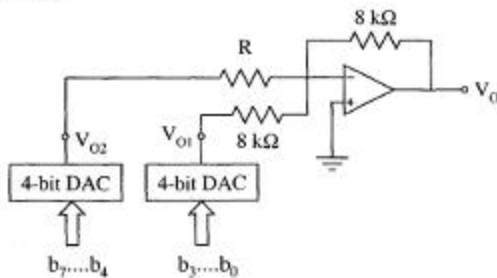
It can be inferred that the system has

- (A) one real pole in the right-half of s-plane  
(B) a pair of complex conjugate poles in the right-half of s-plane  
(C) a pair of real poles symmetrically placed around  $s = 0$   
(D) a pair of complex conjugate poles on the imaginary axis of the s-plane

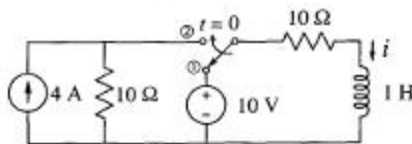
- Q.11 The amplifier shown below has a voltage gain of  $-2.5$ , an input resistance of  $10 \text{ k}\Omega$  and a lower  $3\text{-dB}$  cut-off frequency of  $20 \text{ Hz}$ . Which one of the following statements is **TRUE** when the emitter resistance  $R_E$  is doubled?



- (A) Magnitude of voltage gain will decrease  
 (B) Input resistance will decrease  
 (C) Collector bias current will increase  
 (D) Lower  $3\text{-dB}$  cut-off frequency will increase
- Q.12 Figure below shows a circuit for implementing an 8-bit Digital-to-Analog converter (DAC) using two identical 4-bit DACs with equal reference voltages. Assume that  $b_0$  represents LSB,  $b_7$  MSB and the opamp is ideal. To obtain correct analog values corresponding to an 8-bit DAC at the output  $V_o$ , the value of resistor  $R$  is



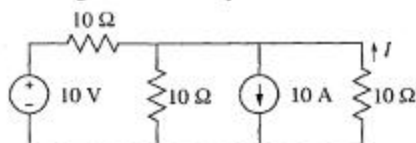
- (A)  $0.25 \text{ k}\Omega$   
 (B)  $0.5 \text{ k}\Omega$   
 (C)  $1 \text{ k}\Omega$   
 (D)  $8 \text{ k}\Omega$
- Q.13 In the circuit shown below, the switch, initially at position 1 for a long time, is changed to position 2 at  $t = 0$ .



The current  $i$  through the inductor for  $t \geq 0$  is

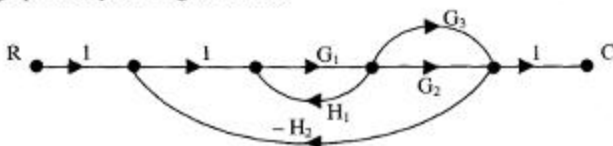
- (A)  $1 - e^{-20t} \text{ A}$   
 (B)  $1 + e^{-20t} \text{ A}$   
 (C)  $1 + 2e^{-20t} \text{ A}$   
 (D)  $2 - e^{-20t} \text{ A}$

- Q.14 The current  $I$  shown in the circuit given below is equal to



- (A) 3 A (B) 3.67 A (C) 6 A (D) 9 A

- Q.15 The signal flow graph of a system is given below.



The transfer function ( $C/R$ ) of the system is

- (A)  $(G_1G_2 + G_1G_3)/(1 + G_1G_2H_2)$   
 (B)  $(G_1G_2 + G_1G_3)/(1 - G_1H_1 + G_1G_2H_2)$   
 (C)  $(G_1G_2 + G_1G_3)/(1 - G_1H_1 + G_1G_2H_2 + G_1G_3H_2)$   
 (D)  $(G_1G_2 + G_1G_3)/(1 - G_1H_1 + G_1G_2H_2 + G_1G_3H_2 + G_1G_2G_3H_1)$
- Q.16 For the Boolean expression  $f = \bar{a}\bar{b}\bar{c} + \bar{a}b\bar{c} + a\bar{b}\bar{c} + abc + abc$ , the minimized Product of Sum (PoS) expression is

- (A)  $f = (b+c).(a+\bar{c})$  (B)  $f = (\bar{b}+c).(\bar{a}+c)$   
 (C)  $f = (\bar{b}+c).(a+\bar{c})$  (D)  $f = \bar{c} + abc$

- Q.17 The base of the number system for the addition operation  $24 + 14 = 41$  to be true is

- (A) 8 (B) 7 (C) 6 (D) 5

- Q.18 An  $8K \times 8$  bit RAM is interfaced to an 8085 microprocessor. In a fully decoded scheme if the address of the last memory location of this RAM is  $4FFFH$ , the address of the first memory location of the RAM will be

- (A)  $1000H$  (B)  $2000H$  (C)  $3000H$  (D)  $4000H$

- Q.19 The Treadmill Test is used to diagnose

- (A) the balancing style during walk of the patient  
 (B) the auditory activity of the patient  
 (C) the visual activity of the patient  
 (D) the cardiac activity of the patient

- Q.20 The characteristics of a thermometer measuring ambient temperature is  $2 \frac{dT_i}{dt} + T_i - T_a = 0$ , where  $T_i$  and  $T_a$  are the indicated and ambient temperatures, respectively, both in  $^{\circ}C$ , and time is in seconds. The  $-3$  dB cut-off frequency in the frequency response of the thermometer is

- (A)  $\frac{1}{4\pi}$  Hz (B)  $\frac{1}{2}$  Hz (C) 1 Hz (D)  $2\pi$  Hz

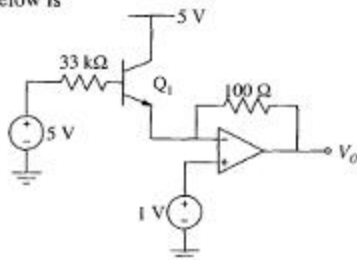
- Q.21 For a copper-constantan (Type T) thermocouple, the junction potential  $E$  (in  $\mu\text{V}$ ) at  $\theta^\circ\text{C}$  is given by  $E = 38.74\theta + 3.3 \times 10^{-2}\theta^2 + 2.07 \times 10^{-4}\theta^3 - 2.2 \times 10^{-6}\theta^4 + \text{higher order terms}$ , assuming the cold junction compensation. The sensitivity of thermocouple at  $100^\circ\text{C}$  is approximately  
 (A)  $45.34 \mu\text{V}/^\circ\text{C}$  (B)  $42.75 \mu\text{V}/^\circ\text{C}$  (C)  $38.74 \mu\text{V}/^\circ\text{C}$  (D)  $0.06 \mu\text{V}/^\circ\text{C}$
- Q.22 The temperature of a furnace is monitored at a distance of 50 m away. The temperature transmitter has a range of  $0\text{--}500^\circ\text{C}$  and provides  $4\text{--}20$  mA current output. The measured temperature and the output current have a straight line relationship with positive slope. The temperature is determined from the voltage measured across a resistance of  $500\ \Omega$  in the current loop. If the voltage measured across the resistance is  $4$  V, the temperature of the furnace is  
 (A)  $100^\circ\text{C}$  (B)  $125^\circ\text{C}$  (C)  $150^\circ\text{C}$  (D)  $200^\circ\text{C}$
- Q.23 The core/cladding index difference of a single-mode optical fiber cable is  $0.01$ . The refractive index of the material of the core is  $1.5$ . The maximum angle of acceptance of the fiber is approximately equal to  
 (A)  $17.5^\circ$  (B)  $12.1^\circ$  (C)  $8.6^\circ$  (D)  $2.0^\circ$
- Q.24 The conventional way of expressing vibration is in terms of  
 (A) Richter scale  
 (B) acceleration due to gravity  
 (C) speed of sound  
 (D) atmospheric pressure
- Q.25 The primary and secondary of an LVDT (stroke length  $\pm 50$  mm) are connected to a  $3$  kHz sinusoidal source and ideal semiconductor diode bridge-based phase sensitive demodulator circuit. The core of the LVDT remains static at  $15$  mm above the ideal null position. The frequency of the voltage observed at the input of the low-pass filter is  
 (A)  $1$  kHz (B)  $1.5$  kHz (C)  $3$  kHz (D)  $6$  kHz

**Q. 26 to Q. 55 carry two marks each.**

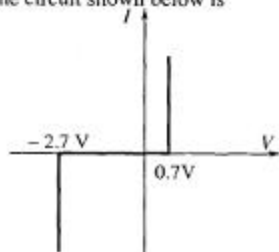
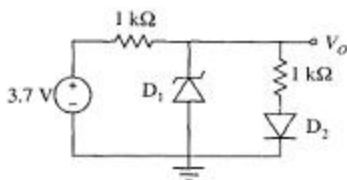
- Q.26 The series  $\sum_{m=0}^{\infty} \frac{1}{4^m} (x-1)^{2m}$  converges for  
 (A)  $-2 < x < 2$  (B)  $-1 < x < 3$  (C)  $-3 < x < 1$  (D)  $x < 3$
- Q.27 Consider the differential equation  $\ddot{y} + 2\dot{y} + y = 0$  with boundary conditions  $y(0) = 1$ ,  $y(1) = 0$ . The value of  $y(2)$  is  
 (A)  $-1$  (B)  $-e^{-1}$  (C)  $-e^{-2}$  (D)  $-e^2$
- Q.28 The box 1 contains chips numbered  $3, 6, 9, 12$  and  $15$ . The box 2 contains chips numbered  $6, 11, 16, 21$  and  $26$ . Two chips, one from each box, are drawn at random. The numbers written on these chips are multiplied. The probability for the product to be an even number is  
 (A)  $6/25$  (B)  $2/5$  (C)  $3/5$  (D)  $19/25$

- Q.29 The extremum (minimum or maximum) point of a function  $f(x)$  is to be determined by solving  $\frac{d f(x)}{d x} = 0$  using the Newton-Raphson method. Let  $f(x) = x^3 - 6x$  and  $x_0 = 1$  be the initial guess of  $x$ . The value of  $x$  after two iterations ( $x_2$ ) is
- (A) 0.0141            (B) 1.4142            (C) 1.4167            (D) 1.5000
- Q.30 The unit-step response of a negative unity feedback system with the open-loop transfer function  $G(s) = \frac{6}{s+5}$  is
- (A)  $1 - e^{-5t}$             (B)  $6 - 6e^{-5t}$             (C)  $\frac{6}{5} - \frac{6}{5}e^{-5t}$             (D)  $\frac{6}{11} - \frac{6}{11}e^{-11t}$
- Q.31 The transfer function of the system described by the state-space equations
- $$\begin{bmatrix} \dot{x}_1 \\ \dot{x}_2 \end{bmatrix} = \begin{bmatrix} -4 & -1 \\ -3 & -1 \end{bmatrix} \begin{bmatrix} x_1 \\ x_2 \end{bmatrix} + \begin{bmatrix} 1 \\ 1 \end{bmatrix} u, \quad y = [1 \quad 0] \begin{bmatrix} x_1 \\ x_2 \end{bmatrix}$$
- is
- (A)  $\frac{s}{s^2 + 5s + 1}$             (B)  $\frac{2s}{s^2 + 5s + 1}$             (C)  $\frac{3s}{s^2 + 5s + 1}$             (D)  $\frac{4s}{s^2 + 5s + 1}$
- Q.32 Consider the second-order system with the characteristic equation  $s(s+3) + K(s+5) = 0$ . Based on the properties of the root loci, it can be shown that the complex portion of the root loci of the given system for  $0 < K < \infty$  is described by a circle, and the two breakaway points on the real axis are
- (A)  $-5 \pm \sqrt{5}/2$             (B)  $-5 \pm \sqrt{5}$             (C)  $-5 \pm \sqrt{10}$             (D)  $-5 \pm 2\sqrt{5}$
- Q.33 In a flapper-nozzle displacement transducer, the values of the following parameters are given: Diameter of the orifice = 0.2 mm, Diameter of the nozzle = 0.8 mm, Supply pressure =  $1.4 \times 10^2$  kPa (gauge), Ambient pressure = 0 (gauge). The maximum value of the sensitivity is
- (A) 4.0 MPa/mm            (B) 5.6 MPa/mm            (C) 6.4 MPa/mm            (D) 7.3 MPa/mm
- Q.34 A differential push-pull type capacitive displacement sensor (nominal capacitance  $C_0 = 0.01 \mu\text{F}$ ) is connected in two adjacent arms of an ac bridge in such a way that the output voltage of the bridge is independent of the frequency of the supply voltage. Supply to the bridge is 1V at 1 kHz, and two equal resistances ( $R = 3.9 \text{ k}\Omega$ ) are placed in the other two arms of the bridge. The bridge sensitivity is
- (A) 0.001 mV/pF            (B) 0.05 mV/pF            (C) 0.1 mV/pF            (D) 0.5 mV/pF
- Q.35 A turbine flowmeter is rotating at 72 rpm. The flux  $\Psi$  linked to the nearby magnet and coil assembly is given by  $\Psi(\theta) = 3 + \cos(4\theta)$  mWb, where  $\theta$  is the angular position (in radian). The amplitude and frequency of the output voltage signal, respectively, are
- (A) 4 mV and 45.8 Hz            (B) 30.2 mV and 4.8 Hz  
(C) 30.2 mV and 30.2 Hz            (D) 288 mV and 45.8 Hz

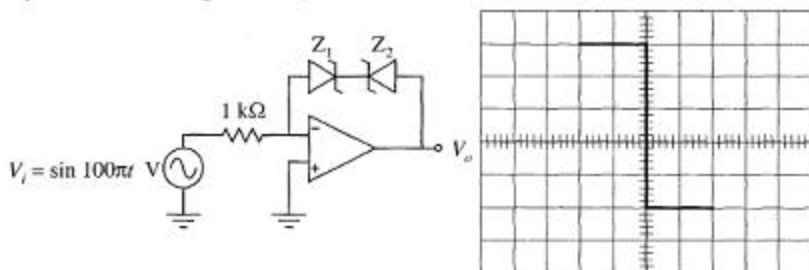
- Q.36 Assuming base-emitter voltage of  $0.7\text{ V}$  and  $\beta = 99$  of transistor  $Q_1$ , the output voltage  $V_o$  in the ideal opamp circuit shown below is



- (A)  $-1\text{ V}$       (B)  $-1/3.3\text{ V}$       (C)  $0\text{ V}$       (D)  $2\text{ V}$
- Q.37 Assuming zener diode  $D_1$  has current-voltage characteristics as shown below on the right and forward voltage drop of diode  $D_2$  is  $0.7\text{ V}$ , the voltage  $V_o$  in the circuit shown below is



- (A)  $3.7\text{ V}$       (B)  $2.7\text{ V}$       (C)  $2.2\text{ V}$       (D)  $0\text{ V}$
- Q.38 The transfer characteristics of the circuit drawn below is observed on an oscilloscope used in XY mode. The display on the oscilloscope is shown on the right hand side.  $V_i$  is connected to the X input with a setting of  $0.5\text{ V/div}$ , and  $V_o$  is connected to the Y input with a setting of  $2\text{ V/div}$ . The beam is positioned at the origin when  $V_i$  is zero.

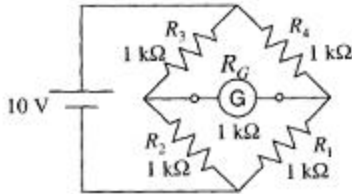


Assuming that the opamp is ideal and the zener diodes have forward biased voltage drop of  $0.7\text{ V}$ , the values of reverse break-down voltages of  $Z_1$  and  $Z_2$  are, respectively.

- (A)  $3.3\text{ V}$  and  $5.3\text{ V}$       (B)  $4.7\text{ V}$  and  $6.7\text{ V}$       (C)  $6.7\text{ V}$  and  $4.7\text{ V}$       (D)  $5.3\text{ V}$  and  $3.3\text{ V}$
- Q.39 Power in a three phase star connected balanced inductive load is measured by two wattmeter method. The phase voltage and phase current are  $230\text{ V}$  and  $5\text{ A}$ , respectively. The power factor of the load is  $0.707$ . The readings  $P_1$  and  $P_2$  of the two wattmeters are
- (A)  $P_1 = 298\text{ W}$  and  $P_2 = 1111\text{ W}$       (B)  $P_1 = 516\text{ W}$  and  $P_2 = 1924\text{ W}$   
 (C)  $P_1 = 1220\text{ W}$  and  $P_2 = 1220\text{ W}$       (D)  $P_1 = 1111\text{ W}$  and  $P_2 = -516\text{ W}$

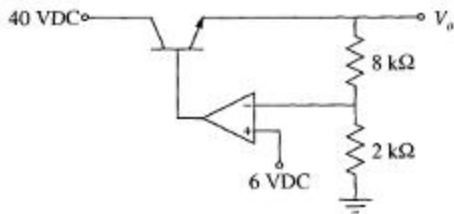


- Q.40 In the Wheatstone bridge shown below, when the resistance  $R_1$  increases by  $1 \Omega$ , the current through the galvanometer is

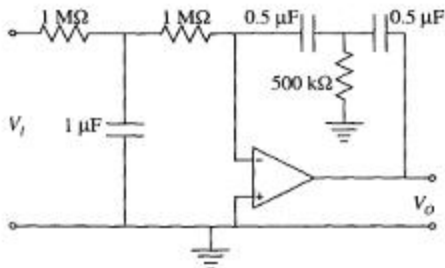


(consider the Thevenin equivalent resistance of the bridge in the calculations)

- (A)  $1.25 \mu\text{A}$       (B)  $2.5 \mu\text{A}$       (C)  $12.5 \mu\text{A}$       (D)  $25 \mu\text{A}$
- Q.41 The value of  $V_o$  of the series regulator shown below is

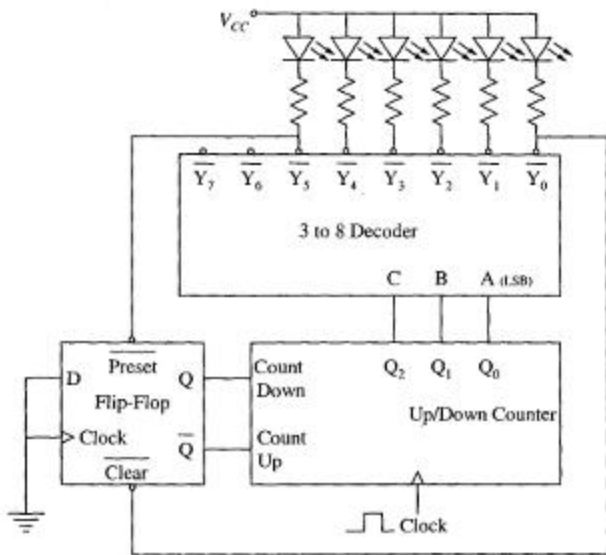


- (A) 24 V      (B) 28 V      (C) 30 V      (D) 32 V
- Q.42 The ideal opamp based circuit shown below acts as a



- (A) low-pass filter      (B) high-pass filter      (C) band-pass filter      (D) band-reject filter
- Q.43 A 4-bit successive approximation type of A/D converter has an input range of 0 to 15 volts. The output bit  $b_1$  next to the LSB has a stuck-at-zero fault. The pair of input voltages that produces the same output code word is
- (A) 2 V and 4 V      (B) 4 V and 6 V      (C) 1 V and 2 V      (D) 8 V and 9 V

- Q.44 The number of objects crossing a window sequentially at variable speed is to be counted using an interrupt in the 8085 microprocessor. The objects are sensed by an optical source and a detector with associated signal conditioning circuit. The circuit produces a logic high output as long as the object is in front of the window, and this output is used to interrupt the processor. The duration of an object being in front of the window is in the range of 100 ms to 2 s. The processor takes 1 ms to process the input after an interrupt. The best choice of interrupt for an error free counting is
- (A) RST 5.5      (B) RST 6.5      (C) RST 7.5      (D) INTR
- Q.45 The circuit below shows an up/down counter working with a decoder and a flip-flop. Preset and Clear of the flip-flop are asynchronous active-low inputs.



Assuming that the initial value of counter output ( $Q_2 Q_1 Q_0$ ) as zero, the counter outputs in decimal for 12 clock cycles are

- (A) 0, 1, 2, 3, 4, 4, 3, 2, 1, 1, 2, 3, 4  
 (B) 0, 1, 2, 3, 4, 5, 0, 1, 2, 3, 4, 5, 0  
 (C) 0, 1, 2, 3, 4, 5, 5, 4, 3, 2, 1, 0, 1  
 (D) 0, 1, 2, 3, 4, 5, 4, 3, 2, 1, 0, 1, 2
- Q.46 A square wave (amplitude  $\pm 10\text{ mV}$ , frequency 5 kHz, duty cycle 50%) is passed through an ideal low-pass filter with pass-band gain and cut-off frequency of 0 dB and 10 kHz respectively. The filtered signal is subsequently "buried" additively into a zero-mean noise process of one-sided power-spectral density (PSD) of  $25\text{ pW Hz}^{-1}$  up to a frequency of 2 MHz. The PSD of the noise is assumed to be zero beyond 2 MHz. The signal-to-noise ratio of the output is

- (A) 0 dB      (B) 0.1 dB      (C) 1.0 dB      (D) 3 dB

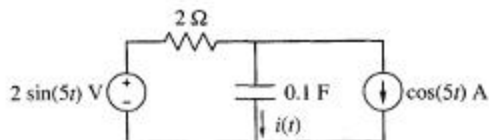
- Q.47 Consider the difference equation  $y[n] - \frac{1}{3}y[n-1] = x[n]$  and suppose that  $x[n] = \left(\frac{1}{2}\right)^n u[n]$ . Assuming the condition of initial rest, the solution for  $y[n]$ ,  $n \geq 0$  is

(A)  $3\left(\frac{1}{3}\right)^n - 2\left(\frac{1}{2}\right)^n$     (B)  $-2\left(\frac{1}{3}\right)^n + 3\left(\frac{1}{2}\right)^n$     (C)  $\frac{2}{3}\left(\frac{1}{3}\right)^n + \frac{1}{3}\left(\frac{1}{2}\right)^n$     (D)  $\frac{1}{3}\left(\frac{1}{3}\right)^n + \frac{2}{3}\left(\frac{1}{2}\right)^n$

### Common Data Questions

#### Common Data for Questions 48 and 49:

Consider the circuit shown below.



- Q.48 The current  $i(t)$  through the capacitor is  
 (A)  $\sin(5t)$  A    (B)  $\cos(5t)$  A    (C)  $\sin(5t - 45^\circ)$  A    (D) 1 A
- Q.49 The average total power delivered by the two sources is  
 (A) 0 W    (B) 0.5 W    (C) 2 W    (D) 4 W

#### Common Data for Questions 50 and 51:

The open-loop transfer function of a unity negative feedback control system is given by

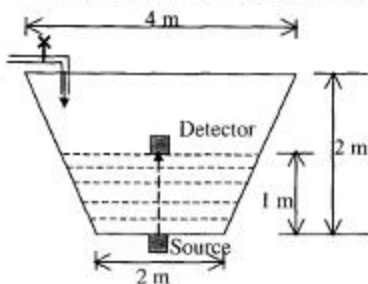
$$G(s) = \frac{K}{(s+5)^3}$$

- Q.50 The value of  $K$  for the phase margin of the system to be  $45^\circ$  is  
 (A)  $250\sqrt{5}$     (B)  $250\sqrt{2}$     (C)  $125\sqrt{5}$     (D)  $125\sqrt{2}$
- Q.51 The value of  $K$  for the damping ratio  $\zeta$  to be 0.5, corresponding to the dominant closed-loop complex conjugate pole pair is  
 (A) 250    (B) 125    (C) 75    (D) 50

## Linked Answer Questions

### Statement for Linked Answer Questions 52 and 53:

The level of water, stored in a truncated conical bath, is measured by a gamma-ray radiation sensor. The initial level of water is 1 m, and the level is increasing due to water inflow at the constant rate of  $0.125 \text{ m}^3/\text{s}$ . Assume mass absorption coefficient of water is  $77 \times 10^{-4} \text{ m}^2/\text{kg}$  and density of water is  $1000 \text{ kg/m}^3$ .

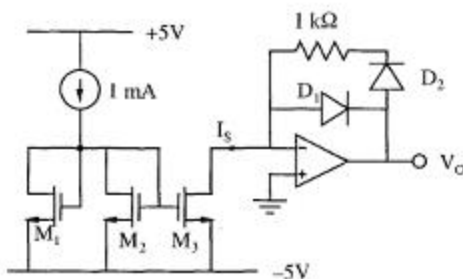


(Figure is not to scale.)

- Q.52 When the intensity of radiation received by the floating detector is half of the intensity detected initially, the level of water is
- (A) 1.09 m      (B) 1.5 m      (C) 1.8 m      (D) 1.9 m
- Q.53 When the floating detector is at the level calculated in Q.52, the time elapsed is
- (A) 4.1 s      (B) 5.23 s      (C) 10.52 s      (D) 50.63 s

### Statement for Linked Answer Questions 54 and 55:

M1, M2 and M3 in the circuit shown below are matched N-channel enhancement mode MOSFETs operating in saturation mode, forward voltage drop of each diode is 0.7 V, reverse leakage current of each diode is negligible and the opamp is ideal.



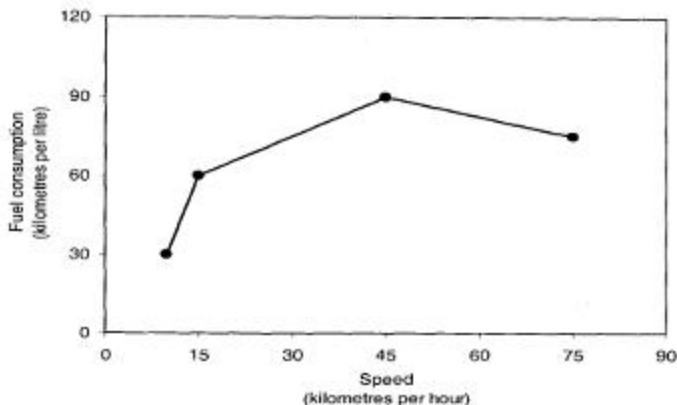
- Q.54 The current  $I_S$  in the circuit is
- (A)  $-1 \text{ mA}$       (B)  $0.5 \text{ mA}$       (C)  $1 \text{ mA}$       (D)  $2 \text{ mA}$
- Q.55 For the computed value of current  $I_S$ , the output voltage  $V_O$  is
- (A)  $1.2 \text{ V}$       (B)  $0.7 \text{ V}$       (C)  $0.2 \text{ V}$       (D)  $-0.7 \text{ V}$

**General Aptitude (GA) Questions****Q. 56 – Q. 60 carry one mark each.**

- Q.56 There are two candidates P and Q in an election. During the campaign, 40% of the voters promised to vote for P, and rest for Q. However, on the day of election 15% of the voters went back on their promise to vote for P and instead voted for Q. 25% of the voters went back on their promise to vote for Q and instead voted for P. Suppose, P lost by 2 votes, then what was the total number of voters?
- (A) 100                      (B) 110                      (C) 90                      (D) 95
- Q.57 The question below consists of a pair of related words followed by four pairs of words. Select the pair that best expresses the relation in the original pair:  
**Gladiator : Arena**
- (A) dancer : stage  
(B) commuter : train  
(C) teacher : classroom  
(D) lawyer : courtroom
- Q.58 Choose the most appropriate word from the options given below to complete the following sentence:  
**Under ethical guidelines recently adopted by the Indian Medical Association, human genes are to be manipulated only to correct diseases for which \_\_\_\_\_ treatments are unsatisfactory.**
- (A) similar  
(B) most  
(C) uncommon  
(D) available
- Q.59 Choose the word from the options given below that is most nearly opposite in meaning to the given word:  
**Frequency**
- (A) periodicity  
(B) rarity  
(C) gradualness  
(D) persistency
- Q.60 Choose the most appropriate word from the options given below to complete the following sentence:  
**It was her view that the country's problems had been \_\_\_\_\_ by foreign technocrats, so that to invite them to come back would be counter-productive.**
- (A) identified  
(B) ascertained  
(C) exacerbated  
(D) analysed

**Q. 61 to Q. 65 carry two marks each.**

- Q.61 The fuel consumed by a motorcycle during a journey while traveling at various speeds is indicated in the graph below.



The distances covered during four laps of the journey are listed in the table below

Lap	Distance (kilometres)	Average speed (kilometres per hour)
P	15	15
Q	75	45
R	40	75
S	10	10

From the given data, we can conclude that the fuel consumed per kilometre was least during the lap

- (A) P                      (B) Q                      (C) R                      (D) S
- Q.62 The horse has played a little known but very important role in the field of medicine. Horses were injected with toxins of diseases until their blood built up immunities. Then a serum was made from their blood. Serums to fight with diphtheria and tetanus were developed this way. It can be inferred from the passage, that horses were

- (A) given immunity to diseases  
 (B) generally quite immune to diseases  
 (C) given medicines to fight toxins  
 (D) given diphtheria and tetanus serums
- Q.63 The sum of  $n$  terms of the series  $4+44+444+\dots$  is
- (A)  $(4/81) [10^{n+1} - 9n - 1]$   
 (B)  $(4/81) [10^{n-1} - 9n - 1]$   
 (C)  $(4/81) [10^{n+1} - 9n - 10]$   
 (D)  $(4/81) [10^n - 9n - 10]$
- Q.64 Given that  $f(y) = |y|/y$ , and  $q$  is any non-zero real number, the value of  $|f(q) - f(-q)|$  is
- (A) 0                      (B) -1                      (C) 1                      (D) 2
- Q.65 Three friends, R, S and T shared toffee from a bowl. R took  $1/3^{\text{rd}}$  of the toffees, but returned four to the bowl. S took  $1/4^{\text{th}}$  of what was left but returned three toffees to the bowl. T took half of the remainder but returned two back into the bowl. If the bowl had 17 toffees left, how many toffees were originally there in the bowl?
- (A) 38                      (B) 31                      (C) 48                      (D) 41

**END OF THE QUESTION PAPER**