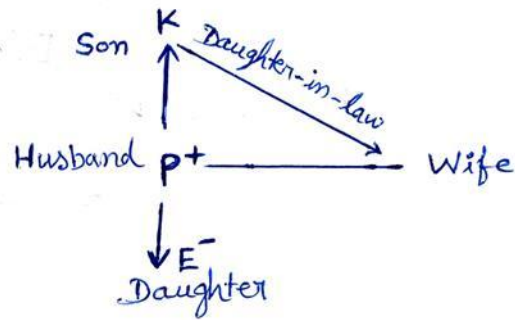


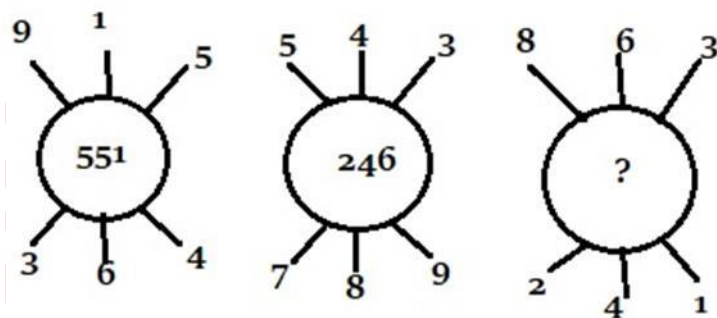
1. E is the daughter of P who is the husband of the only daughter-in-law of K? How is E is related to K?

(+) Denote male
 (-) Denote female



Answer: E is grand daughter of K.

2. Insert the missing character.

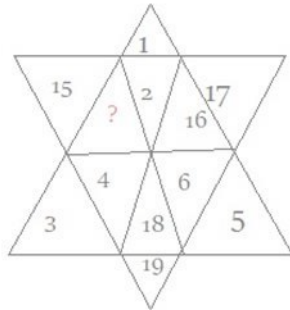


As, $915 - 364 = 551$

and $543 - 789 = 246$

Similarly, $863 - 241 = 622$

3. Find the missing character.



From the fig. $15 + 3 = 18$

$4 + ? = 18$

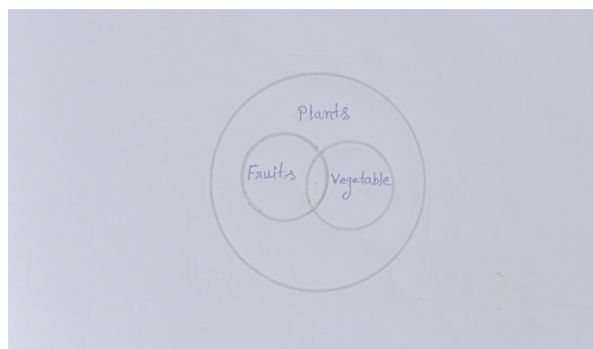
$? = 14$, Hence the missing number is

4. Statements

- Some fruits are vegetables.
- All vegetables are plants.

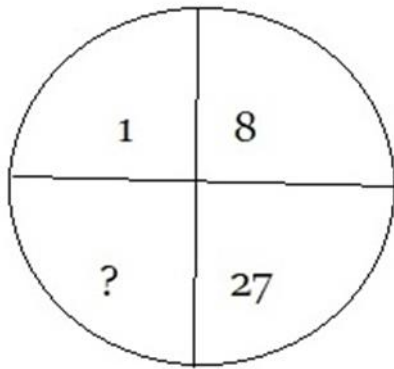
Conclusions

- Some plants are vegetables.
- All fruits are plants.



⇒ From the venn diagram Both conclusions follow.

5. Insert the missing character depicted by '?'



As, $1^3 = 1$

$2^3 = 8$

$3^3 = 27$

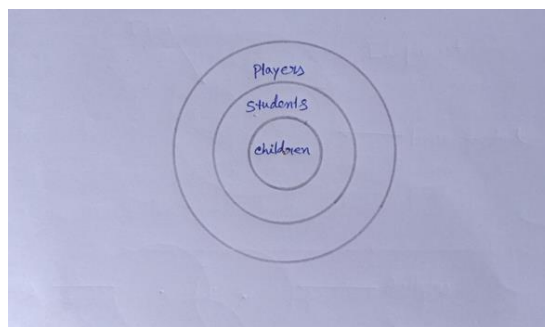
Similarly, $4^3 = 64$

6. Statements

- All children are students.
- All students are players.

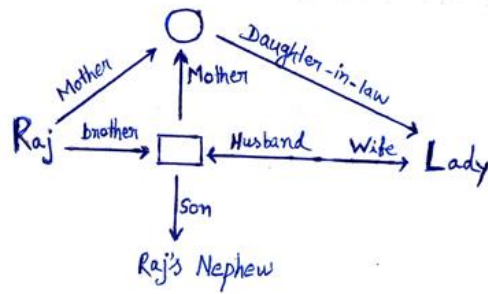
Conclusions

- All cricketers are students.
- All Childrens are players.



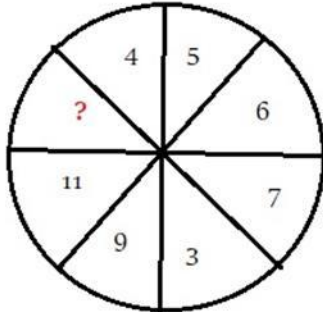
⇒ According to venn diagram, all children are players. so conclusion II follows.

7. Raj said, "That lady is my nephew's father's mother's only daughter-in-law," If Raj has only one brother. How is that lady related to Raj



Answer: That lady is sister-in-law of Raj

8. Insert the missing character



⇒ The sum of numbers in upper and lower part of circle is same.

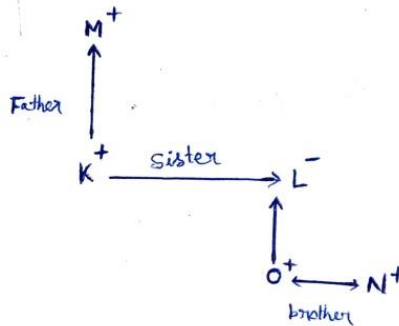
Here, $4 + 5 + 6 + ? = 7 + 3 + 9 + 11$

⇒ $15 + ? = 30$

⇒ $? = 15$

9. L is K's sister. M is the father of K, N and O are brother. L is the mother of O. How is N related to K?

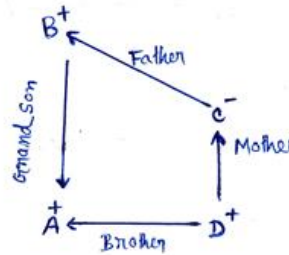
'+' male
'-' female



Answer: N is nephew of K

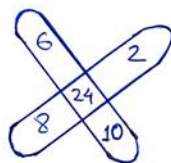
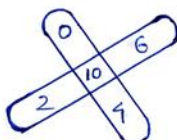
10. A is D's brother. D is the son of Mrs C. B is Mrs C's father. How is A related to B?

(+) Denote male
(-) Denote female



Answer: A is grandson of B.

11. Insert the missing character depicted by '?'



$$\text{As, } 0 + 6 + 4 + 2 = 12$$

$$12 - 2 = 10$$

$$6 + 2 + 10 + 8 = 26$$

$$26 - 2 = 24$$

$$\text{Similarly, } 4 + 14 + 12 + 10 = 40$$

$$40 - 2 = 38$$

12. A, B, C, D and E are five rivers. A is shorter than B but longer than E. C is the longest and D is little shorter than B and little longer than A. Which is the shortest river?

⇒ Arrange the given informations in the descending order of length.

(i) A is shorter than B but longer than E.

$$\text{i.e. } B > A > E$$

(ii) C is the longest and D is little shorter than B and little longer than A

$$\text{i.e. } C > B > D > A$$

From (i) and (ii)

$$\text{we can write } C > B > D > A > E$$

Ans: E is shortest river.

13. If Pori is taller than Ram but shorter than Rubi and Ram is just as tall as Barsha but taller than Rajesh, then who is the shortest person?

Arrange the given informations in the descending order.

(i) Pori is taller than Ram but shorter than Rubi

$$\text{i.e. } Rubi > Pori > Ram$$

(ii) Ram is just as tall as Barsha but taller than Rajesh

$$\text{i.e. } Ram = Barsha > Rajesh$$

From (i) and (ii)

Rubi > Pori > Ram = Barsha > Rajesh

Ans: Rajesh is the shortest person

14. Sham ranked 7th from top and 35th from the bottom in a class. How many students are there in class?

⇒ Total number of students in the class = (Sham's rank from the top) + (Sumit's rank from the bottom) - 1

$$= 7 + 35 - 1$$

$$= 41\text{th}$$

15. Arun ranks 14th in a class of 48th. What will be his rank from the last?

⇒ Arun's rank from the last = (Total number of students) - (Arun's rank from the top) + 1

$$= 48 - 14 + 1$$

$$= 35\text{th}$$

XXXXXXXX