

Question Booklet Series:

**B****B. Ed. Jammu Entrance Test – 2018  
QUESTION BOOKLET**Question Booklet  
Number:**220595****INSTRUCTIONS**Maximum Time Allowed : 3 Hours  
Negative Marking : 0.25No. of Questions: 180  
Maximum Marks: 180Roll Number: Answer Sheet Number: 

Please read the following instructions carefully:

1) **Check the Booklet thoroughly:** In case of any defect – Misprint, Missing question(s), Missing page, Blank page, Damaged or Defaced page, or duplication of question(s) / Page(s), get the Booklet changed with the Booklet of the same series from the Room Invigilator. No complaint shall be entertained after the Entrance Test is over.

2) Write your Roll Number and the OMR Answer Sheet Number on the Question Booklet.

3) Mark carefully your Roll Number, Question Booklet Number, Paper Code, Question Booklet Series and Course on the OMR Answer Sheet and sign at the appropriate place. If you have committed any mistake in making these entries, you must immediately report to the invigilator. You can also make representation to the Controller of Examinations within 3 days after conclusion of the test for rectifying this mistake, failing which no such claim will be entertained afterwards.

4) Strictly follow the instructions given by the Centre Supervisor / Room Invigilator and those given on the Question Booklet.

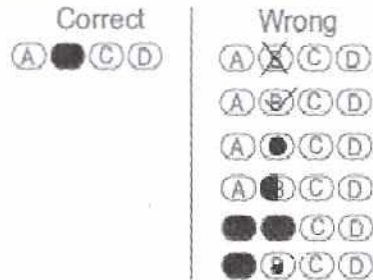
5) Candidates are not allowed to carry any papers, notes, books, calculators, cellular phones, scanning devices, pagers etc. to the Examination Hall. Any candidate found using, or in possession of, such unauthorized material or indulging in copying or impersonation or adopting unfair means / reporting late / without Admit Card will be debarred from the Entrance Test.

6) Please mark the right responses on the OMR Sheet with ONLY a Blue/Black ball point pen. Use of eraser, whitener (fluid) and cutting on the OMR Answer Sheet is NOT allowed.

7) The test is of objective type, containing multiple choice questions (MCQs). Each objective question is followed by four responses. You are required to choose the correct/best response and mark your response on the OMR Answer Sheet and NOT on the Question Booklet.

8) There will be 0.25 negative marking for every wrong answer.

9) For marking response to a question, completely darken the CIRCLE so that the alphabet inside the CIRCLE is not visible. Darken only ONE circle for each question. If you darken more than one circle, it will be treated as a wrong answer. The CORRECT and the WRONG method of darkening the CIRCLE on the OMR Answer Sheet are shown below.



10) Please be careful while marking the response to questions. The response once marked cannot be changed and if done shall be treated as a wrong answer.

11) In view of the limited time, do NOT waste your time on a question which you find difficult. Attempt easier questions first and come back to the difficult questions later during the test.

12) DO NOT make any stray or faint mark anywhere in or around the oval on the OMR Answer Sheet. It will be read as double shading and will make answer invalid. DO NOT fold or wrinkle the OMR Answer Sheet.

13) Rough work MUST NOT be done on the OMR Answer Sheet. Use rough page of your Question Booklet for this purpose.

14) Candidates are provided carbonless OMR Answer Sheet, having original copy and candidate's copy. After completing the examination, candidates are directed to fold at perforation on the top of the sheet, tear it to separate original copy and candidate's copy and then hand over the original copy of OMR Answer Sheet to the Room Invigilator and retain candidate's copy.

**DO NOT OPEN THE SEAL OF THIS BOOKLET UNTIL TOLD TO DO SO**

## Section 1 - General English

1) Choose the correct meaning of the idiom highlighted in the sentence.

The opponent told him to settle the matter quickly as **the ball was in his court** now.

- A) it is up to him to kick the ball
- B) he has to take the ball to court
- C) up to him to make the decision
- D) it is a quick decision to be taken

2) Choose the correct plural of the given word:

Radius

- A) radiises
- B) radias
- C) radiusus
- D) radii

3) Choose the correct form of verb to complete the sentence.

Peter \_\_\_\_\_ Maths tuition for the last one month.

- A) have been taking
- B) has been taking
- C) have taken
- D) has taken

4) Identify the sentence which is correctly framed.

- A) The aeroplane is flying higher to the birds.
- B) Mount Everest is the highest peak in the world.
- C) Indian Ocean is the deepest ocean than many oceans.
- D) Bus travel is more preferable than train travel.

5) Change the following sentence from active voice to passive voice. I gave him a car for his birthday.

- A) By me, he is given a car for his birthday.
- B) He was by me given a car for his birthday.
- C) On his birthday he was given a car by me.
- D) He was gotten a car on his birthday from me.

6) Fill in the blanks with the correct idiom.

At the board meeting the presenter gave a \_\_\_\_\_ of the market.

- A) eye view of the bird
- B) bird with an eye view
- C) bird's eye view
- D) low view of the bird

7) Choose the correct synonym of the highlighted word.

The boss **berated** his secretary, so she left the job.

- A) praised
- B) disrespected
- C) reprimanded
- D) demoted

8) Fill in the blanks with a suitable adjective:

The peacock is a/an \_\_\_\_\_ bird.

- A) ugly
- B) tender
- C) beautiful
- D) red

9) Choose the correct word for the given sentence:

One who is not sure of God's existence.

- A) Believer
- B) Agnostic
- C) Anarchist
- D) Bohemian

10) Fill in the blanks with a suitable article:

\_\_\_\_\_ price of petrol is constantly rising.

- A) A
- B) An
- C) The
- D) No article

11) Complete the sentence with the correct tag question.

It was very hot and humid yesterday \_\_\_\_\_?

- A) was it
- B) is it
- C) wasn't it
- D) were it

12) Choose the most suitable adjective to complete the sentence.

Tonight she looked the \_\_\_\_\_ among all the stars.

- A) good
- B) well
- C) best
- D) better

13) Complete the sentence by choosing the correct phrase.

Anil always drives \_\_\_\_\_ on the highway.

- A) so quickly
- B) with care
- C) with speeds
- D) that slowly

14) Fill in the blanks with a suitable article:

Hari bought \_\_\_ camera because he was going on a holiday.

- A) a
- B) the
- C) an
- D) No article required

15) Choose the sentence that has been changed from the given simple sentence into a compound sentence.

He must work hard to get the promotion.

- A) He must work hard to get promoted.
- B) To get promoted he must work hard.
- C) For getting promoted he must work hard.
- D) He must work hard and get the promotion.

16) Choose the correct meaning of the idiom highlighted in the sentence.

If he thinks that shifting to a new house is **a piece of cake**, then he is mistaken.

- A) a challenging task
- B) a part of the cake
- C) hard work
- D) an easy task

17) Complete the sentence by choosing the feminine gender of the word in the bracket.

My (nephew) played in the national team.

- A) nephewess
- B) sister
- C) niece
- D) nicess

18) Choose the correct option to change the following sentence from direct to indirect speech.

Shekhar said, 'I am late for today's meeting.'

- A) Shekhar said he is late for today's meeting.
- B) Shekhar said that he was late for that day's meeting.
- C) Shekhar said he was late for this day's meeting.
- D) Shekhar said that he had been late for today's meeting.

19) Choose the correct sentence.

- A) Mother went to the market on Monday.
- B) Mother is cook food daily.
- C) Mother teach us in the evening.
- D) Mother talks phone daily.

20) Choose the correct spelling of the word to complete the sentence.

The sofa at your home is very \_\_\_\_\_.

- A) comfertable
- B) comfortable
- C) camfortable
- D) comfrtable

21) Choose the correct conjunction to complete the sentence.

The policeman assured them that he would get back to them \_\_\_\_\_ he had the information.

- A) then
- B) until
- C) before
- D) as soon as

22) Choose the suitable adjective to fill in the blanks.

The laptop is \_\_\_\_\_ than the desktop.

- A) more useful
- B) as useful as
- C) most useful
- D) usefulest

23) Complete the sentence by choosing the most suitable determiner.

There are \_\_\_\_\_ flowers in her garden.

- A) much
- B) many
- C) little
- D) lot

24) Choose one word for the group of words:

One who is bad at spellings

- A) cacophony
- B) cartographer
- C) cacographer
- D) connoisseur

25) Choose the sentence that is arranged correctly.

The emu /on its eggs, /it covers/does not sit / them up with grass and of the sun/ leaves them/to be hatched by the heat.

- A) The emu hatches its eggs by covers them up with grass and leaves them in heat of the sun.
- B) The emu does not sit on its eggs, it covers them up

with grass and leaves them to be hatched by the heat of the sun.

- C) The emu covers them up with grass and leaves them to be hatched by the heat of the sun.
- D) The emu covers the eggs up with grass and leaves them to hatch by the heat of the sun.

26) Choose the sentence with the correct punctuation marks.

- A) Hari i am going to the market today
- B) It's a good idea; hopefully it will be a success.
- C) This is my job and i am going to do it.
- D) It's a great Sunday morning.

27) Complete the question by choosing the correct tag.

You have cleaned the refrigerator today, \_\_\_\_\_?

- A) didn't you
- B) should you
- C) have you
- D) haven't you

28) Complete the sentence by choosing the correct phrase.

The girl \_\_\_\_\_ is my sister.

- A) is wearing pink dress
- B) on the concert
- C) in the pink dress
- D) was dancing

29) Choose the correct spelling of the word to complete the sentence.

Neeta loves to ride her \_\_\_\_\_ in the park.

- A) biecycle
- B) bycycle
- C) becycle
- D) bicycle

30) Complete the sentence by choosing the correct phrasal ending.

The wrestler hoped \_\_\_\_\_.

- A) winning the first prize.
- B) to winning the prize.
- C) win the prize.
- D) to win the first prize.

31) Select the correct form of the verb to complete the sentence.

She had already \_\_\_\_\_ half way when he called her.

- A) gone
- B) go
- C) went
- D) going

32) Choose the correct form of verb to complete the sentence.

You couldn't have \_\_\_\_\_ a better colour for your wedding dress.

- A) choose
- B) chosed
- C) chosen
- D) chose

33) Choose the correct indirect speech for the given direct sentence.

Shiv said 'I often have a large cup of coffee in the morning'.

- A) Shiv asked that he often has a large cup of coffee in the morning.
- B) Shiv said that he often had a large cup of coffee in the morning.
- C) Shiv said that he is often having a large cup of coffee in the morning.
- D) Shiv said that he will often have a large cup of coffee in the morning.

Directions for questions 34-38:

Read the passage and answer the following question.

### **NOTES FROM MY FATHER**

BY DAVE COLANGELO

IT'S HARD TO TALK to dads sometimes. The roles we often expect our fathers to play protector, provider-can makes them seem impenetrable.

That's how it was with my dad. He was never much of a talker. He held his cards pretty close to his chest-so to speak because he never gambled. He rarely drank, so we didn't get to see him loosen up after a few beers. He didn't tell stories about himself at the dinner table or when we went for walks in the park. He was a private person and seemed to want to stay that way.

Bringing up the many questions I had about life before I was born-his early hopes and dreams, loves and heartbreaks-let alone sharing my own feelings, felt like too much for us to handle. I didn't want to threaten the integrity of his hard shell. I had got used to it, and it made me feel secure.

But when my relationship and career simultaneously took a hit not long ago, things had to change. I needed my dad to pull back the curtain so I could see him a mortal. I was facing serious questions about my own nature, and I wanted to know how he had found this way because I felt like I had lost mine.

In an acute moment of desperation, it occurred to me that sending an email might be the key. An email can be crafted slowly and carefully. I could speak at a comfortable distance and give him room to adjust. He'd be up in his office-his "cubbyhole," in my mom's words-a comfy fortress filled with bookshelves, dusty CD-ROMs, and stacks of old newspapers. I'd be at my desk in a basement apartment 20 minutes away, in downtown Toronto, Canada.

So I wrote him a message. I told him about my regrets and fears, and I asked him to answer, if he felt like it, and to share something about himself, something that would give me much-needed perspective on both of our lives.

34) The writer's father was

- A) happy
- B) reserved and private
- C) extrovert and out-going
- D) shy and submissive

35) What is the writer talking about in the passage?

- A) Scoldings he got from his father.
- B) Meetings he had with his father
- C) Conversation with his father.
- D) Attachment to his father.

36) According to the passage, which of the following statements is true?

- A) Talking to dads is not a complicated issue.
- B) The writer's father always narrated stories to him
- C) The writer's father was an alcoholic.
- D) The writer's personal life and career suffered at the same time.

37) He wanted his father to open up and discuss life with him

- A) So that he could face his problems and solve his issues just as his father would have done.
- B) because he was upset with his father.
- C) because he did not want any advice from his father.
- D) because he wanted to develop a strong bond with his father.

38) What did the writer tell his father in his first message?

- A) He wrote about his happy moments of life.
- B) He discussed his career and job options.
- C) He spoke about the relationship with his father.
- D) He discussed his regrets and fears.

39) Choose the correct synonym of the highlighted word in the given sentence.

Centuries ago, this **enormous** temple was built in Ankor vat.

- A) miniature
- B) small
- C) meagre
- D) humongous

40) Choose the correct sentence that is changed from a simple sentence to complex sentence.

On the arrival of all the passengers the airplane will leave.

- A) The airplane will leave when all the passengers arrive.
- B) The airplane will leave on the arrival of all the passengers.
- C) On the arrival of all the passengers the airplane shall leave.
- D) The passengers will leave when the airplane will fly.

41) Select the correct sentence.

- A) He regretted told a lie to his father.
- B) His image is totally destroyed as he telling lies everyday.
- C) The child listened to the teacher carefully.
- D) The kids were playing happily from the garden.

42) Fill in the correct form of verb.

She \_\_\_\_\_ to her office late tomorrow

- A) had gone
- B) was going
- C) went
- D) will be going

43) Fill in the blank with the correct options.

All the essential rules have to \_\_\_\_\_ strictly for a better outcome.

- A) be followed
- B) follow
- C) followed
- D) are followed

44) Choose the correct young one of the following animal:

Donkey

- A) Colt
- B) faun
- C) fowl
- D) foal

45) Choose the correct synonym of the highlighted word in the given sentence.

He has provided me with an **exhaustive** list.

- A) comprehensive
- B) simple
- C) numerous
- D) jumbled

---

Section 2 - General Awareness

46) 'Ladakh: Crossroads of High Asia', is a book written by which of the following authors?

- A) Tim Burford
- B) David Steinberg
- C) Janet Rizvi
- D) Sherry Turkle

47) Which of the following is one of the applications of Nitrogen?

- (i) Nitrogen gas is used in food storage to keep packaged or bulk foods fresh
- (ii) Liquid nitrogen can be applied for freezing and transport of food products
- (iii) Nitrogen is used in inflation of motorcycle tyres

- A) (i) and (ii) only
- B) (ii) and (iii) only
- C) (i), (ii) and (iii)
- D) (i) and (iii) only

48) The Chinar tree is an integral part of Kashmiri culture and is found in almost every village in the valley. Its scientific name is

- A) Platanus orientalis
- B) Ficus benghalensis
- C) Ficus religiosa
- D) Azadirachta indica

49) In which of the following cities was the 19th SAARC Summit 2016 held?

- A) Karachi, Pakistan
- B) New Delhi, India
- C) Jaffna, Sri Lanka
- D) Islamabad, Pakistan

50) The First Anglo-Sikh war broke out in the year

- A) 1845
- B) 1854
- C) 1835
- D) 1857

51) Uri Hydroelectric Dam is built on which of the following rivers?

- A) Suru
- B) Chenab
- C) Jhelum
- D) Ravi

52) As per Koppen's climate classification system, a Tropical Monsoon climate with monsoonal, short dry season is denoted by

- A) Cfb
- B) Am
- C) ET
- D) H

53) Mount Godwin Austen, the earth's second highest mountain located in Himalayas is also known as

- A) Nanga Parbat
- B) Manaslu
- C) Annapurna
- D) K2

54) According to Indian Meteorological Department, which of the following is NOT one of the meteorological seasons of India?

- A) Winter season
- B) Pre-Monsoon Season
- C) Southwest Monsoon Season
- D) Post Winter Monsoon Season

55) According to the Archaeological Survey of India, the Ancient Site and Remains, Burzahom contains megaliths of which some are erected and others have fallen. The total number of megaliths is:

- A) 11
- B) 5
- C) 8
- D) 6

56) Which of the following languages was included in the Eighth Schedule of the Indian Constitution?

- (i) Dogri
- (ii) Urdu
- (iii) Balti

- A) (i), (ii) and (iii)
- B) (i) and (iii)
- C) (i) and (ii)
- D) (ii) and (iii)

57) Which part of the Constitution of India (Articles 5-11) deals with provisions related to Citizenship of India?

- A) PART II
- B) PART III
- C) PART IV
- D) PART X

58) Mughal General Mirza Muhammad Haidar Dughlat, a member of ruling family in Kashgar, invaded Kashmir in 1540 CE on behalf of which of the following emperors?

- A) Aurangzeb
- B) Akbar
- C) Shahjahan
- D) Humayun

59) Which of the following is the main agency for preventing corruption in the Central Government and was established in 1964 by an executive resolution of the Central Government?

- A) Central Bureau of Investigation
- B) Enforcement Directorate
- C) Serious Fraud Investigation Office
- D) Central Vigilance Commission

60) Pandit Bhajan Sopori who belongs to the Sufiana gharana of Indian classical music is associated with which of the following musical instruments?

- A) Tabla
- B) Flute
- C) Harmonium
- D) Santoor

61) Which of the following is the single largest component of human blood that contains water, salts, enzymes, antibodies and other proteins?

- A) Red Blood cells
- B) White Blood cells
- C) Plasma
- D) Blood platelets

62) In which year the Article 370 of the Constitution was adopted by the Indian Constituent Assembly thus ensuring a special status and internal autonomy for Jammu and Kashmir?

- A) 1949
- B) 1956
- C) 1952
- D) 1964

63) As per the Constitution of India, who has been given the authority to declare three types of emergencies: National emergency, State emergency and Financial emergency?

- A) The Comptroller and Audit General of India
- B) The Vice-President of India
- C) The Supreme Court of India
- D) The President of India

64) Renowned Hindi scholar and writer Mamta Kalia was chosen for Vyas Samman Award 2017 for which of the following novels?

- A) Beghar
- B) Dukkham Sukkham
- C) Bolne Wali Aurat
- D) Nirmohi



65) According to the Archaeological Survey of India, the mosque which is said to have been built in 1623 A.D. by Empress Nur Jahan is

- A) Khanqah of Shah Hamdan
- B) Taj-ul-Masajid
- C) Pathar Masjid
- D) Mosque of Akhun Mulla Shah

66) Shanti Stupa, a Buddhist white-domed stupa is located in which of the following districts of Jammu and Kashmir?

- A) Ganderbal
- B) Baramulla
- C) Leh
- D) Jammu

67) According to the Directorate of Economics and Statistics- Department of Agriculture, Cooperation and Farmers Welfare, which of the following states are the major rice producers in India?

- A) Sikkim, Manipur and Meghalaya
- B) Maharashtra, Himachal Pradesh and Rajasthan
- C) West Bengal, Punjab and Uttar Pradesh
- D) Gujarat, Goa and Maharashtra

68) The major portion of honey is comprised of:

- A) Carbohydrates
- B) Proteins
- C) Amino Acids
- D) Antioxidants

69) Which of the following rivers is also known as Wanla River, a river in the Ladakh region of Jammu and Kashmir that pours into the Indus River at Lamayuru?

- A) Tsarap River
- B) Krishna River
- C) Yapola River
- D) Narmada River

70) Which of the following Act has added a new Part IX-A to the Constitution of India and is entitled as 'The Municipalities' and consists of provisions from Articles 243-P to 243-ZG?

- A) 74th Amendment Act of 1992
- B) 73rd Amendment Act of 1992
- C) 61st Amendment Act of 1989
- D) 86th Amendment Act of 2002

71) Who among the following is the First Indian Cricket player to claim a hat-trick in Test Cricket?

- A) Harbhajan Singh
- B) Kapil Dev
- C) Anil Kumble
- D) Bishan Singh Bedi

72) The Gulmarg Biosphere Reserve houses a good population of pheasants and upland birds apart from other species, both resident and migratory. The common birds are:

- (i) Griffon Vulture
- (ii) Monal
- (iii) Koklas

- A) (i) and (ii) only
- B) (i) and (iii) only
- C) (ii) and (iii) only
- D) (i), (ii) and (iii)

73) Who among the following was the First Chief Minister of Jammu and Kashmir?

- A) Syed Mir Qasim
- B) Ghulam Mohammed Sadiq
- C) Sheikh Abdullah
- D) Farooq Abdullah

74) The First Muslim (Pashtun) ruler of Kashmir and the founder of the Shah Mir dynasty was

- A) Alauddin Shah Mir
- B) Shams-ud-Din Shah Mir
- C) Jamshid Shah Mir
- D) Ali Sher Shah Mir

75) Which of the following former Chief Justice of India was born in Jammu and Kashmir?

- A) Aziz Mushabber Ahmadi
- B) Vishweshwar Nath Khare
- C) Adarsh Sein Anand
- D) Madhukar Hiralal Kania

76) The "Instrument of Accession" was executed by Maharaja Hari Singh (ruler of the princely state of Jammu and Kashmir) thereby integrating the State of Jammu & Kashmir into the Indian Union on

- A) 26th January 1948
- B) 26th October 1949
- C) 26th January 1950
- D) 26th October 1947

77) Who among the following was a Tibetan Buddhist refugee in Kashmir, who established himself as the ruler after Zulu?

- A) Dulacha
- B) Nund Rishi
- C) Rinchana
- D) Shah Mir

78) Bandarpunch, a glacier situated on the northern slopes of Bandarpunch peak, Bandarpunch west, and Khatling peak, is an important glacier of

- A) Yamuna river basin
- B) Dhauri Ganga system
- C) Bhagirathi river basin
- D) Jhelum river basin

79) In the Rajatarangini, a history of Kashmir written by Kalhana in the mid-12th century, it is stated that the valley of Kashmir was formerly a

- A) mountain
- B) forest
- C) desert
- D) lake

80) Swaminathan S. Anklesaria Aiyar is a prominent Indian journalist and columnist. As of May 2018, he is a consulting editor for

- A) The Hindu
- B) Dainik Bhaskar
- C) The Indian Express
- D) The Economic Times

81) The Utkal Plains are provinces of which of the following geomorphological divisions of India?

- A) Central Plains
- B) Central Highlands
- C) The West Coast
- D) The East Coast

82) The scientific name for Markhor, the largest of the goat family, identified by its thick fur, flowing beard and corkscrew horns is:

- A) Ursus arctos
- B) Capra Falconeri
- C) Vulpes Vulpes
- D) Capra sibirica

83) Which of the following projects started in 1907 supplies electricity to the towns of Srinagar, Sopore, Baramulla and Gulmarg?

- A) Mohra Hydro-Electric Power Stations
- B) Baglihar Dam of Jammu and Kashmir
- C) Uri Hydroelectric Dam
- D) Chutak Hydroelectric Project

84) Which of the following national parks of Jammu and Kashmir is known as the largest national park of India?

- A) Kazinag National Park
- B) Kishtwar National Park
- C) Dachigam National Park
- D) Hemis National Park

85) Which of the following countries is NOT located on the African Continent?

- A) Chad
- B) Gabon
- C) Nicaragua
- D) Mauritania

86) 'Languages of Belonging: Islam, Regional Identity, and ' The Making of Kashmir', is a book written by which of the following authors?

- A) Sanjay Kak
- B) Chitrlekha Zutshi
- C) Tariq Ali
- D) Brigid Keenan

87) Which of the following is NOT one of the rivers flowing through the European continent?

- A) Benue River
- B) Danube River
- C) Loire River
- D) Rhine River

88) The Association of Southeast Asian Nations (ASEAN) was established on 8 August 1967 in which of the following cities?

- A) Jakarta
- B) Manila
- C) Bangkok
- D) Bali

89) Rustom Khurshedji Karanjia was an Indian journalist and editor, who published and edited the weekly tabloid newspaper called

- A) Dina Thanthi
- B) Mid Day
- C) Blitz
- D) Mint

90) Kashmiri language also known as Koshur is a language from the Dardic subgroup of the

- A) Sino-Tibetan languages
- B) Indo-Aryan languages
- C) Indo-Burmese languages
- D) Dravidian languages

---

### Section 3 - Aptitude for Teaching Profession

91) Classical conditioning theory was given by

- A) Pavlov
- B) Ausubel
- C) Piaget
- D) Kohlberg

92) Estimating where a ball will land after it is thrown and then moving to the correct location to catch the ball is related to which of the following domains as per Blooms Taxonomy?

- A) Cognitive
- B) Thinking
- C) Psychomotor
- D) Affective

93) While indulging in problem solving, a student suddenly arrives at the solution of a problem. Which theory of learning most suitably describes this situation?

- A) Theory of Trial and Error
- B) Theory of Conditioning
- C) Theory of Insight
- D) Theory of Association

94) Which of the following is an example of students learning through deductive method?

- A) Students questioning and engaging in dialogue.
- B) Students engaged in verifying the theory and generalizations presented to them
- C) Students working in groups for solving a problem
- D) Students doing hands on experiments

95) In a class the learners are not familiar with the new learning ideas that the teacher is presenting and hence the teacher plans to provide support and scaffolding to link the new idea to what they might already know. Which kind of advanced organizer is this teacher using?

- A) Graphic organizers
- B) Narrative advance organizers
- C) Expository advance organizers
- D) Skimming

96) A teacher is conducting a semester end cumulative exam but the exam covers only 3 chapters done in last few weeks instead of the entire portion covered during the semester. Which of the following will be true for this exam?

- A) Low face validity
- B) Low construct validity
- C) Low criterion validity
- D) Low content validity

97) While engaging in playing games on a mobile phone, a child learns about the different countries and their capitals. Such a type of learning is called

- A) Informal learning
- B) Intentional learning
- C) Incidental learning
- D) Formal learning

98) A learner is able to examine the relationships between different concepts and apply them in different situations including those situations which were previously not encountered. According to Gagne's model, this is which form of learning

- A) Rule learning
- B) Concept learning
- C) Chaining
- D) Signal learning

99) In a pre school and primary classes, effective learning has to be the one where the verbal knowledge is presented in combination with visual information like pictures, models, illustrations, diagrams etc. Such sort of representations as per Bruner fall under which of the following categories?

- A) Multiple representation
- B) Enactive representation
- C) Iconic representation
- D) Symbolic representation

100) For programmed learning as per Gagne's model which of the following is essential?

- A) Stimulus-response learning
- B) Discrimination learning
- C) Chain learning
- D) Concept learning

101) Who gave the idea of archetypes which exist in collective consciousness and influence behaviour?

- A) Sigmund Freud
- B) Carl Jung
- C) Erik Erikson
- D) Alfred Adler

102) If a student is engaged in insightful thinking, synthesis and ability to react to new novel situations, then as per Sternberg's Triarchic Theory of Human Intelligence, which intelligence is he displaying?

- A) Componential intelligence
- B) Analytical intelligence
- C) Creative intelligence
- D) Practical intelligence

103) A student who is learning a new language translates a story into the new language. The assessment of this translation has to focus on which type of learning outcome?

- A) Analysis
- B) Recognition
- C) Synthesis
- D) Understanding

104) When can the students be expected to reach the Plateau stage of a learning curve?

- A) The teacher has been demonstrating an experiment
- B) The teacher is presenting a complex and abstract content continually
- C) The teacher has given worksheets for students to solve
- D) The teacher is using lecture cum discussion method

105) Article 21 –A of Constitution of India deals with which of the following?

- A) Educational interests of the weaker sections of the Indian Community
- B) Women's education
- C) Free and compulsory education of all children
- D) Cultural and educational rights to establish and administer educational institutions

106) According to Biglan's classification of disciplines, under which category does education come?

- A) Pure – Soft – Life
- B) Applied – Hard- Non life
- C) Pure- hard- Nonlife
- D) Applied-Soft- Life

107) Which of the following statement is asserted by Vygotsky's theory?

- A) Development is independent of social development
- B) Social learning and development occur simultaneously
- C) Development necessarily precedes learning
- D) Social learning precedes development.

108) A particular school has adopted the philosophy of teaching only through the play way method during the elementary years. This School is based on which philosophical ism

- A) Realism
- B) Naturalism
- C) Pragmatism
- D) Idealism

109) Who critiqued the educational system in his discourse called 'Deschooling Society'?

- A) Paulo Freire
- B) Ivan Illich
- C) Basil Bernstein
- D) Antonio Gramsci

110) An existentialist teacher is most likely to advocate which of the following modes of learning in a classroom?

- A) Constructivist mode of learning
- B) Culture of freedom
- C) Maximal utilization of mental abilities
- D) Cooperative and Coordinated learning

111) In a class the students are shown a video on electrical repairs. If this student later is able to do electrical repairing in his house what kind of learning may be held responsible for this?

- A) Accidental learning
- B) Latent learning
- C) Incidental learning
- D) Intentional learning

112) Who discovered the technique of concept mapping for representing the knowledge of students?

- A) Maria Birbili
- B) David Ausubel
- C) Ray McAleese
- D) Joseph Novak

113) Which of the following branches of philosophy does the study of knowledge and values come under respectively?

- A) Axiology and metaphysics
- B) Epistemology and axiology
- C) Metaphysics and epistemology
- D) Epistemology and metacognition

114) Using the Cognitive Apprenticeship model, a teacher encourages students to verbalize their knowledge and thinking. This is which step of the model?

- A) Articulation
- B) Modelling
- C) Reflection
- D) Coaching

115) A teacher during her teaching helps students to set goals for themselves regarding learning and provides them feedback regarding their progress. This teacher as per Eric Eriksons' theory is helping students overcome which crisis?

- A) Industry vs Inferiority
- B) Identity vs Role Confusion
- C) Trust vs mistrust
- D) Integrity vs despair

116) The Law of Partial Activity can be related to which of the following maxims?

- A) Simple to complex
- B) Concrete to abstract
- C) Part to whole
- D) Known to unknown

117) The Rashtriya Madhyamik Shiksha Abhiyan (RMSA) scheme was initiated in the year

- A) 2009
- B) 2010
- C) 2011
- D) 2007

118) A curriculum is developed which maximally focuses on utilitarian approach and learning by way of practice and hands on experience. The aims of this curriculum have been influenced by

- A) Pragmatism
- B) Existentialism
- C) Naturalism
- D) Realism

119) In a school a remedial program is started for the learners with dyslexia. Which type of sampling technique would be most suitable for creating group of learners with dyslexia who would be subjected to this remedial program?

- A) Systematic sampling
- B) Stratified sampling
- C) Judgemental sampling
- D) Quota sampling

120) Who is the current Chairman of UGC?

- A) Dr.V.S. Krishna
- B) Prof. Arun S. Nigavekar
- C) Prof D P Singh
- D) Prof. Sukhadeo Thorat

121) A teacher discovers that many students in her class are unable to solve the sums despite having been taught the chapter and given sums for home practice. The teacher should initiate which type of research for finding a solution to this problem?

- A) Fundamental Research
- B) Action research
- C) Basic Research
- D) Applied Research

122) As per which philosophy, reality is constantly changing and learning happens when experiences and thoughts are applied to problems?

- A) Realism
- B) Idealism
- C) Pragmatism
- D) Existentialism

123) A student has poor spatial planning on paper and struggles to organize letters on a line. He may be suffering from

- A) Dyspepsia
- B) Dyscalculia
- C) Dysgraphia
- D) Dyslexia

124) Which of the following psychologists gave a theory that contrasted meaningful learning from rote learning?

- A) Skinner
- B) Ausubel
- C) Vygotsky
- D) Thorndike

125) In a classroom, the teacher on assessing the multiple intelligence of students finds that some students are able to do self-reflection while others are able to detect moods of others and respond approximately. Which prominent multiple intelligences do they possess?

- A) Kinesthetic and Interpersonal
- B) Naturalist and Intrapersonal
- C) Intrapersonal and Interpersonal
- D) Logical and Intrapersonal

126) On doing an action research regarding poor performance of students in physics, the teacher found that most of the students had a phobia for math which affected their physics performance. In order to remove this phobia from students, which theory of learning will be most useful?

- A) Classical Conditioning
- B) Thorndike's law of learning
- C) Operant Conditioning
- D) Meaningful Verbal learning

127) A child who was bullied in his classroom resorts to being aggressive to his siblings at home. What kind of defense mechanism is he displaying?

- A) Reaction formation
- B) Projection
- C) Displacement
- D) Sublimation

128) Who among the following dedicated his life to assessing the creativity among children and is regarded as the 'Father of Modern Creativity'.

- A) Tolman
- B) Guilford
- C) Goleman
- D) Torrance

129) Who introduced the concept of purposive behaviourism?

- A) Bandura
- B) Lewin
- C) Hull
- D) Tolman

130) If the knowledge presented to learner is one which is objective and verifiable, then which school of philosophy does it associate with?

- A) Idealism
- B) Existentialism
- C) Naturalism
- D) Realism

131) Which of the following elements is not included in the 5 E learning cycle?

- A) Explore
- B) Elicit
- C) Elaborate
- D) Evaluate

132) During a lesson based on Edward de Bono's six thinking hats strategy, the students at one phase are discussing the positive aspects of the concept being discussed and probing it for value and benefit. Which hat is being worn at this stage?

- A) Yellow hat
- B) Green hat
- C) Red hat
- D) Black hat

133) In an inquiry based classroom, the learners are expected to frame and test the hypothesis. As per Piaget's theory of cognitive development in which of the following stages should the learner ideally be.

- A) Concrete operational stage
- B) Formal operations stage
- C) Sensori motor stage
- D) Preoperational stage

134) A teacher has planned a constructivist approach to foster effective learning among students. Which of the following would best suit her approach?

- A) Making the students see a video on the lessons and engaging in questioning
- B) Making students engage in quiz and rewarding the answers
- C) Making the students work in groups and solve problems using hands on materials
- D) Taking students on a field trip

135) A teacher designs an objective test for some concept in science. Which of the following will not be a feature of this test?

- A) Assessing the speed of completing test
- B) Assessing the problem solving abilities
- C) Assessing the reliability of the test
- D) Assessing the objectivity in scoring

#### Section 4 – Reasoning

136) Directions to Solve:-

In each of the following questions, there is a certain relationship between two given words on one side of : : and one word is given on another side of : : while another word is to be found from the given alternatives, having the same relation with this word as the words of the given pair bear. Choose the correct alternative.

SKY: BIRD:: WATER: ?

- A) FISH
- B) SUN
- C) MOON
- D) EAT

137) In a certain code language, 3029 is coded as "%\$#". What will be the code for 99302?

- A) %\$##
- B) #\$\$%#
- C) ##%\*\$
- D) \$%#\*\$

138) 3/6th of 6 kg Biryani was consumed during breakfast. In the lunch time, 50% of what was left was consumed. How much Biryani was left?

- A) 3/2 kg
- B) 2/3 kg
- C) 3/4 kg
- D) 2/7 kg

139) There is a statement given, which is followed by few conclusions. Choose the conclusion that can be inferred from the given statement.

Statement: A X-mas tree with stars looks beautiful.

Conclusions:

1. A X-mas tree without stars looks ugly.
2. Stars are used for decoration of X-mas tree.

- A) only conclusion 1 follows.
- B) only conclusion 2 follows.
- C) Both 1 and 2 follow.
- D) Neither 1 nor 2 follows.

140) There is a relation between the first number and the symbol written adjacent to it. The corresponding symbol for the number 7 is

3#, 6^, 2@, 7\_

- A) &
- B) \*
- C) \$
- D) (

141) If the present age of Mahi is 30 years and Jeni was born 18 years back, then what is the present average age of Mahi and Jeni?

- A) 25
- B) 22
- C) 24
- D) 12



142) This question is based on following arrangements:-  
58, 72, 89, 15, 64, 42, 87, 23, 60, 27

If 2 is added to each of these numbers, then which will be the second highest number in the group?

- A) 60
- B) 69
- C) 89
- D) 91

143)  $38\%$  of 250 –  $85\%$  of 560 +  $13X = 61$ . What is the value of X?

- A) 34
- B) 25
- C) 37
- D) 45

144) Study the arrangements carefully and give the answer below:

G 5 0 % U 7 D # 8 T P @ 6 1 N L 4 \* Y

Which of the following number is between % and 8?

- A) 8
- B) 7
- C) #
- D) D

145) The number of sides of a regular polygon whose each exterior angle has a measure of  $60^\circ$  is

- A) 4
- B) 5
- C) 6
- D) 3

146) Pointing to a picture in her laptop Saloni said, "He is the son of the only son of my paternal grandfather." How is the man in the picture related to Saloni?

- A) Brother
- B) Uncle
- C) Son
- D) Mother

147) Jyoti, Rupa, Leela, Rahul, Meena and Preeti are sitting a row. Jyoti and Rupa are at the ends. Meena and Preeti are in the centre. Leela is to the immediate left of Jyoti. Who is to the immediate right of Rupa?

- A) Rupa
- B) Rahul
- C) Jyoti
- D) Leela

148) If x is +, - is x, + is -, then what will be the value of  $12 \times 4 - 2 + 5$ ?

- A) 10
- B) 51
- C) 15
- D) 42

149) If in a certain code language, 441 is coded as "21", then what will be the code for 169?

- A) 11
- B) 12
- C) 13
- D) 14

150) What is the next number in the given series?

169, 196, 225, 256, 289, ?

- A) 324
- B) 356
- C) 424
- D) 354

151) A man drives his car 4 km towards north and then turns to left. After driving 2 km he turns right. In which direction is he moving now?

- A) EAST
- B) WEST
- C) SOUTH
- D) NORTH

152) What is the next term of the given series

3, 9, 27, 81, 243, ?

- A) 259
- B) 689
- C) 729
- D) 343

153) In a certain code language, LEBRA is coded as ARBEL. What will be the code for GIRAFFE?

- A) EFAFRIG
- B) EFFARIG
- C) EEFRAIG
- D) EFRIAAG

154) If G @ E means G is the Daughter of E, G & E means G is the Wife of E, G \* E means G is the Father of E, then which of the following shows that M is the sister of T?

- A) M & N \* T
- B) N \* M @ T
- C) M \* N & T
- D) M @ N \* T

155) Triangle ABC and EFG are congruent triangles. AB = 15 cm, BC = 20 cm, AC = 25 cm and FG =  $3x - 7$  cm. Length of the side BC is same as the length of the side FG. The value of x is

- A) 8
- B) 9
- C) 11
- D) 10

156) The length of the diagonals of a rhombus are 6 cm and 8 cm respectively. What is the length of each side of the rhombus?

- A) 2 cm
- B) 4 cm
- C) 8 cm
- D) 5 cm

157) Directions to Solve:-

In the following question, there is a certain relationship between two given words on one side of : : and one word is given on another side of : : while another word is to be found from the given alternatives, having the same relation with this word as the words of the given pair bear. Choose the correct alternative.

ANALOGY: YGOLANA:: PROBLEM: ?

- A) MPBORPL
- B) PMLEBRO
- C) MELBORP
- D) MEBLORP

158) If 8=P, 3=J, 4=T, 5=C, 6=L, 2=D, 1=O, 9=B and 7=Z, then 78911 is equivalent to

- A) ZTBJOO
- B) ZTJJFT
- C) TTFBFB
- D) ZPBOO

159) How many boxes do you require to pack 36 pairs of gloves into the boxes such that each box carry 18 gloves?

- A) 4
- B) 12
- C) 16
- D) 28

160) In a certain language, 'ce se de' is written as *I love insects*, 'he be de' is written as *I hate animals*, 'de ce he' is written as *I love tiger*. What is the code for 'I'?

- A) de
- B) se
- C) ce
- D) be

161) Reeta, Sita, Maria and Roopa study in same class. The seat of Sita is in the East of Reeta's seat but in the north of Maria's seat. The seat of Maria is in the west of Roopa's seat. Roopa's seat is in which direction of Reeta's seat?

- A) EAST
- B) WEST
- C) NORTH-WEST
- D) SOUTH-EAST

162) Three of the following four pairs are alike in a certain way and so form a group. The odd one out is

- A) 115:7
- B) 122:5
- C) 223:7
- D) 476:19

163) If  $x$  is +, - is  $x$ , + is - then, what will be the value of  $100 \times 40 + 12 \times (5 - 18)$  ?

- A) 120
- B) 218
- C) 184
- D) 128

164) Next four alphabets of the series are

a b a b c a b c d a b c d ? ? ? ?

- A) e a b c
- B) e e a b
- C) a b c d
- D) e a c b

165) What is the next number in the given series?

20 ,60, 180, 540,1620, ?

- A) 3240
- B) 4860
- C) 3820
- D) 2640

166) Given below are four numbers out of which three are similar. The odd one out is

100, 101, 105, 107

- A) 100
- B) 101
- C) 105
- D) 107

167) What is the next number in the given series?

11, 13 ,17, 19, 23, 29, ?

- A) 24
- B) 25
- C) 29
- D) 31

168) 30 students in a class want to learn Zumba and 20 students want to learn Yoga. 10 students want to learn both of them and 5 students don't want to learn any of these. What is the total number of students in that class?

- A) 35
- B) 40
- C) 45
- D) 65

169) If  $x$  is +, - is  $x$ , + is - then, what will be the value of  $120 \times [40 \times (6 \% 120) + (14 \times 700 + 3)]$  ?

- A) 1280
- B) -543.8
- C) 530
- D) -720.2

170) There is a statement given, followed by few conclusions. Choose the conclusion that is inferred from the given statement.

Statement: The students who were on the waiting list could finally get berth reservation in Nanda Devi Express, which rarely happens.

Conclusions:

- I. The number of berths available in the Nanda Devi Express is small.
- II. There are less number of trains.
- III. Students in the waiting list generally find it difficult to get berth reservation in Nanda Devi Express

- A) Only conclusion I follows.
- B) Only conclusion III follows.
- C) Conclusion I & III follows.
- D) Conclusion II & III follows.

171) Given below is a statement followed by 3 assumptions. Choose the Assumption that follows the given statement.

Statement: Maheer and his friends are playing Cricket and Maheer is always a top order batsman.

- Assumption I: Maheer likes to play only football.
- Assumption II: Maheer & his friends play at least one Cricket match.
- Assumption III: Maheer is a batsman.

- A) Assumption II & III are implicit
- B) Assumption I & II are implicit
- C) All are implicit
- D) None is implicit.

172) The next term of the series is

A A0 A00 A000000 ?

- A) A00000000
- B) A0000000000
- C) A0000000
- D) A000000000

173) Given below are few numbers out of which one number is different from the others. The odd one out is

17, 41, 43, 47, 53, 61, 71, 73, 81

- A) 47
- B) 17
- C) 53
- D) 81

174) Jeevan is taller than Niteesh, who is taller than Ganesh. Mayank is taller than Niteesh but shorter than Jeevan. Who is the tallest among four?

- A) Jeevan
- B) Niteesh
- C) Ganesh
- D) Mayank

175) If L @ J means L is the Daughter of J, L & J means L is the Wife of J, L \* J means L is the Father of J, then which of the following shows that M is the mother of T?

- A) N \* M @ T
- B) M @ N \* T
- C) M & N \* T
- D) M \* N & T

176) Directions to Solve:-

In the following question, there is a certain relationship between two given words on one side of :: and one word is given on another side of : : while another word is to be found from the given alternatives, having the same relation with this word as the words of the given pair bear. Choose the correct alternative.

NEUROLOGY: BRAIN:: CARDIOLOGY:?

- A) EYES
- B) HEART
- C) BONES
- D) LIVER

177) Given below a statement followed by 2 assumptions.

Choose the assumption that can be assumed from the given statement.

Statement: Manish will go to Europe from India

Assumption I: Manish may be having a passport

Assumption II: Manish is a NRI.

- A) only assumption I is implicit
- B) only assumption II is implicit
- C) both I and II are implicit
- D) neither I nor II are implicit

---

178) There is a statement given, which is followed by few conclusions. Choose the conclusion that can be inferred from the given statement.

Statement: Jolly is a good man.

Conclusions

- I. Jolly is not a bad man.
- II. Jolly enjoys football game.

- A) Only conclusion I follows.
- B) Only conclusion II follows.
- C) Neither I nor II follows.
- D) Both I and II follow.

---

179) There is a statement given, which is followed by few conclusions. Choose the conclusion that can be inferred from the given statement.

Statement: Drugs abuse and addiction is also one of the main reasons of Voluntary Behavior.

Conclusions

- 1. Voluntary Behavior cannot be completely controlled by banning drug abuse only.
- 2. Taking drugs will lead to Voluntary Behavior.
- 3. Voluntary Behavior is an incurable disease.

- A) Only conclusion 2 follows.
- B) Only conclusion 3 follows.
- C) Conclusions 1 & 3 follows.
- D) Conclusions 2 & 3 follows.

180) Pointing to a picture in media gallery, Peter said, "He is the son of the only daughter of the father of my brother." How is Peter related to the man in the picture?

- A) Nephew
- B) Brother
- C) Maternal Uncle
- D) Mother

Space for Rough Work:

Space for Rough Work:

Space for Rough Work:

