

SSC CHSL Tier 1
2016
(1st Feb - Shift 1)

1. Select the related word/letters/number from the given alternatives.
Farmer : Plough :: Painter : ?
A. Brush B. Harrow
C. Axe D. Knife
Ans. A
2. Select the related word/letters/number from the given alternatives.
DB: IC :: YE: ?
A. FJ B. JF
C. TH D. WL
Ans. B
3. Select the related word/letters/number from the given alternatives.
AEG: GKM :: MQS : ?
A. SWY B. SWZ
C. ZWQ D. SWB
Ans. A
4. Select the related word/letters/number from the given alternatives.
17: 71 :: 35: ?
A. 69 B. 56
C. 60 D. 53
Ans. D
5. Select the odd word/letters/number/number pair from the given alternatives.
A. Joule B. Ohm
C. Watt D. Magnetic Field
Ans. D
6. Select the odd word/letters/number/number pair from the given alternatives.
A. BGF B. FDH
C. BAE D. CDE
Ans. D
7. Select the odd word/letters/number/number pair from the given alternatives.
A. 2197 B. 3375
C. 4099 D. 2744
Ans. C
8. Select the odd word/letters/number/number pair from the given alternatives.
A. 794 B. 576
C. 668 D. 992
Ans. B
9. A series is given with one term missing. Select the correct alternative from the given ones that will complete the series.
Padma Shri, Padma Bhushan, Padma Vibhushan, ?
A. Bharat Ratna
B. Ashok Chakra
C. Sahitya Akademi Award
D. Arjuna Award
Ans. A
10. A series is given with one term missing. Select the correct alternative from the given ones that will complete the series.
C A E, F D H, I G K, ?
A. L J N B. O M Q
C. K L M D. P O N
Ans. A
11. A series is given with one term missing. Select the correct alternative from the given ones that will complete the series.
AY, CW, EU, ?
A. GS B. HS
C. GR D. HR
Ans. A
12. A series is given with one term missing. Select the correct alternative from the given ones that will complete the series.
122, 197, 290, ?
A. 399 B. 400
C. 401 D. 402
As. C
13. In the following question, two statements are given each followed by two conclusions I and II. You have to consider the statements to be true even if they seem to be at variance from commonly known facts. You have to decide which of the given conclusions, if any, follows from the given statements.
Statement:
(I) India's GDP continues to grow at one of the reasonable rates but job creation is not picking up the similar pace.
(II) Every year over 20 million young Indians join the workforce.
Conclusions:
(I) Population increase is more than the job creation rate.
(II) Supply basket is less and the demand basket for jobs is very high.
A. Only conclusion II follows
B. Conclusion I and II both follow
C. Neither I nor II follow
D. Only conclusion I follows
Ans. B
14. Five girls are sitting facing towards the north. Rekha is between Shalini and Neetu. Pooja is to the immediate right of Neetu and Shalini is to the immediate right of Neha. Who is sitting in the middle?
A. Shalini B. Neetu
C. Rekha D. Pooja
Ans. C

15. Arrange the given words in the sequence in which they occur in the dictionary.
- i. nature ii. nest
 iii. numeric iv. news
 A. iii, i, ii, iv B. iv, ii, iii, i
 C. i, ii, iv, iii D. i, ii, iii, iv

Ans. C

16. In a certain code language, "TRAIN" is written as "NIART". How is "SCOOTER" written in that code language?
- A. RETOOC B. RETOCSO
 C. RETSCOO D. SCOOTER

Ans. A

17. If "+" means "minus", "x" means "divided by", "÷" means "plus" and "-" means "multiplied by", then $38 \times 2 - 6 + 19 \div 35 = ?$
- A. 130 B. 140
 C. 135 D. 145

Ans. A

18. Which of the following interchanges in signs and numbers will make the given equation correct?
- $8 \times 9 + 2 = 74$
- A. x and =, 2 and 9
 B. x and +, 8 and 2
 C. + and x, 8 and 9
 D. + and =, 74 and 2

Ans. B

19. In the following question, which one set of letters when sequentially placed at the gaps in the given letter series shall complete it? a_b_a_c_a_bc
- A. bccbb B. bcbca
 C. cabca D. acbcb

Ans. A

20. A man is facing west and he turns anti-clockwise by 90 degrees and moves 10m straight, then he again turns 90 degrees anti-clockwise. Which direction is the man facing now?
- A. North B. West
 C. South D. East

Ans. D

21. A word is represented by only one set of numbers as given in any one of the alternatives. The sets of numbers given in the alternatives are represented by two classes of alphabets as in two matrices given below. The columns and rows of Matrix-I are numbered from 0 to 4 and that of Matrix-II are numbered from 5 to 9. A letter from these matrices can be

represented first by its row and next by its column, e.g., 'P' can be represented by 95, 86 etc. and 'T' can be represented by 85, 95 etc. Similarly, you have to identify the set for the word 'ALIKE'.

	0	1	2	3	4
0	M	K	P	P	P
1	L	M	K	Q	N
2	Y	L	M	K	N
3	E	Y	L	M	K
4	B	B	Y	L	N

	5	6	7	8	9
5	I	A	O	O	J
6	C	I	A	S	J
7	E	D	I	A	H
8	T	E	F	I	A
9	T	S	E	G	H

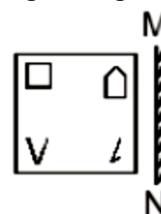
- A. 56, 10, 55, 31, 97
 B. 67, 21, 66, 96, 86
 C. 78, 32, 77, 12, 86
 D. 89, 43, 76, 01, 30


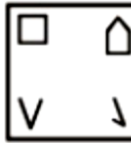
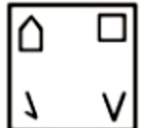
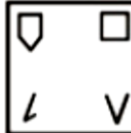
Ans. C

22. Pointing towards a lady in a photograph, a girl says, "Vidit's grandmother is the mother-in-law of this lady". How is the lady in the photograph related to Vidit?
- A. Mother B. Sister
 C. Aunt D. Grandmother

Ans. A

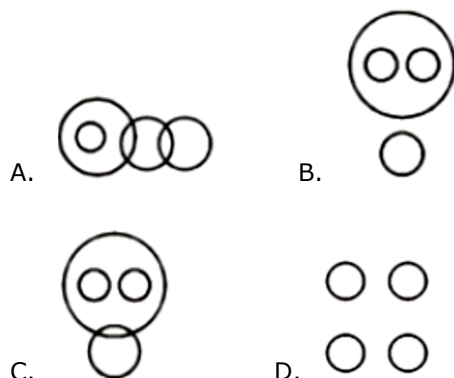
23. If a mirror is placed on the line MN, then which of the answer figures is the right image of the given figure?



- A. 
- B. 
- C. 
- D. 

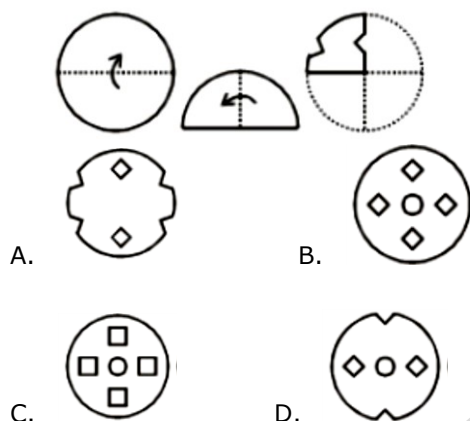
Ans. C

24. Identify the diagram that best represents the relationship among the given classes.
Football, Volleyball, Outdoor Games, Carrom.



Ans. B

25. A piece of paper is folded and punched as shown below in the question figures. From the given answer figures, how it will appear when opened.



Ans. A

26. Chhatrapati Shivaji Terminus station was designed by
A. Frederick William Stevens
B. Santiago Calatrava
C. Fazlur Rahman Khan
D. Frei Otto

Ans. A

27. Who won Nobel prize for Physics in 2015?
A. Hiroshi Amano
B. Takaaki Kajita
C. Isamu Akasaki
D. Makoto Kobayashi

Ans. B

28. Kidney stones are composed of _____.
A. Calcium Oxalate
B. Sodium Chloride
C. Magnesium Nitrate
D. Calcium Bicarbonate

Ans. A

29. Which of the following is not true about Angiosperms?
A. Dominant phase is gametophytes
B. Vascular bundles are present
C. Spores are heterospores
D. Seeds are covered

Ans. A

30. All of the following are excretory (waste) products of animals, except
A. Uric Acid B. Ammonia
C. Carbohydrates D. Urea

Ans. C

31. RNA is a polymeric molecule. What does RNA stand for?
A. Rado Nuclear Acid
B. Ribo Nucleic Acid
C. Rhino Nuclear Acid
D. Resto Nucleus Acid

Ans. B

32. The common name of dichlorodifluoromethane is _____.
A. galena B. Freon
C. gypsum D. borax

Ans. B

33. _____ performs tasks such as inserting, updating, or deleting data occurrences.
A. Data definition language
B. Data manipulation language
C. Query language
D. OQL

Ans. B

34. The Razmnama is a Persian translation of the _____.
A. Mahabharata B. Ramayana
C. Vedas D. Upanishads

Ans. A

35. If demand curve for house cleaning services is $D = 45000 - 21P$ and supply curve is $S = 15000 + 9P$, find the equilibrium Quantity?
A. 12000 units B. 6000 units
C. 24000 units D. 30000 units

Ans. C

36. Goods whose demand is proportional to price are called
A. inferior goods B. Veblen goods
C. normal goods D. exclusive goods

Ans. B

37. Similipal Tiger Reserve is in which state?
A. Maharashtra B. Andhra Pradesh
C. Chhattisgarh D. Odisha

Ans. D

38. Which of the following is a greenhouse gas or a gas which can deplete the ozone layer?

- A. N_2O B. AsH_3
 C. N_2 D. C_5H_{12}

Ans. A

39. Manohar Parrikar is India's _____.

- A. Railway Minister
 B. Finance Minister
 C. HRD Minister
 D. Defence Minister

Ans. D

40. What is the capital of Finland?

- A. Tashkent B. Helsinki
 C. Bern D. Dublin

Ans. B

41. Which city is located on the banks of the river Mula-Mutha?

- A. Surat B. Ahmedabad
 C. Nagpur D. Pune

Ans. D

42. Ajatashatru was the son _____ of

- A. Brahmadatta B. Bindusara
 C. Bimbisara D. Chetaka

Ans. C

43. Chhatrapati Sambhaji (1680–1688 AD) was the ruler of which dynasty?

- A. Maratha B. Nanda
 C. Haryanka D. Maurya

Ans. A

44. Who Invented the computer mouse?

- A. Gene Dolgoff
 B. Brendan Eich
 C. Douglas Engelbart
 D. Federico Faggin

Ans. C

45. _____ states that internal energy is a function of state and the increase in internal energy is equal to the sum of the heat supplied to system and work done by the system.

- A. First law of thermodynamics
 B. Hooke's Law
 C. The coulomb's law
 D. Faraday's Law

Ans. A

46. What is the direction of torque?

- A. Perpendicular to the direction of applied force
 B. Same as the direction of applied force
 C. Opposite to the direction of applied force
 D. Parallel to the radius

Ans. A

47. Article 27 of the Indian Constitution "Freedom as to payment of taxes for promotion of any particular religion" deals with?

- A. the Union Government
 B. the State Government
 C. the directive principles of state policy
 D. the fundamental rights of the Indian Citizen

Ans. D

48. Article 31C of the Indian Constitution "Saving of laws giving effect to certain directive principles" deals with?

- A. the fundamental rights of the Indian Citizen
 B. the State Government
 C. the Union Government
 D. the directive principles of state policy

Ans. A

49. Who among the following has not scored a double hundred in an ODI?

- A. Virender Sehwag
 B. Sachin Tendulkar
 C. Brian Lara
 D. Rohit Sharma

Ans. C

50. Who is the author of "Jaya"?

- A. Sudeep Nagarkar
 B. Devdutt Pattanaik
 C. R. K. Narayan
 D. Aravind Adiga

Ans. B

51. If $7A = 5B = 2C$; find $A : B : C$.

- A. 35:14:10 B. 14:10:35
 C. 2:5:7 D. 10:14:35

Ans. D

52. Which of the following numbers is not a prime number?

- A. 731 B. 227
 C. 347 D. 461

Ans. A

53. A factory buys 7 machines. 2 Machine A, 2 Machine B and rest Machine C. Prices of the machines are Rs 95000, Rs 75000 and Rs 43000 respectively. Calculate the average cost of these machines?

- A. 71000 B. 67000
 C. 75000 D. 65500

Ans. B

54. The value of x for which the expressions $7x+13$ and $13x-7$ become equal is _____.

- A. $-10/3$ B. $3/10$
 C. $-3/10$ D. $10/3$

Ans. D

55. A can do a work in 15 days and B in 9 days. If they work on it together for 5 days, then what fraction of work is left?
 A. $1/6$ B. $3/7$
 C. $1/3$ D. $1/9$

Ans. D

56. On dividing $256a^2b^2c^2$ by $64a^2$, we get
 A. $2c^2$ B. $2b^2$
 C. 4 D. $4b^2c^2$

Ans. D

57. Rehman walks at 8 km/hr and Roma cycles at 13 km/hr towards each other. What was the distance between them when they started if they meet after 36 minutes?
 A. 12.6 kms B. 18.9 kms
 C. 15.8 kms D. 9.5 kms

Ans. A

58. On a certain Principal if the Simple interest for two years is Rs 4800 and Compound interest for the two years is Rs 5088, what is the rate of Interest?
 A. 6 percent B. 24 percent
 C. 12 percent D. 18 percent

Ans. C

59. Two students appeared for an examination. One of them secured 24 marks more than the other and his marks were 65% of the sum of their marks. The marks obtained by them are _____.
 A. 78 and 54 B. 85 and 61
 C. 67 and 43 D. 52 and 28

Ans. D

60. If $3x - 4 > 2 - x/3$ and $3x + 5 > 4x - 5$; then find the value of x?
 A. 7 B. 10
 C. -11 D. 1

Ans. A

61. When a discount of 25% is given on a wedding gown, the profit is 32%. If the discount is 17%, then the profit is _____.
 A. 46.08 percent B. 49 percent
 C. 51.92 percent D. 43.16 percent

Ans. A

62. If $3x + 2y = 7$ and $4x - y = 24$, then $x - y =$ _____.
 A. 9 B. 1
 C. -9 D. -1

Ans. A

63. The co-ordinates of the centroid of a triangle ABC are (-1,-2) what are the co-ordinates of vertex C, if co-ordinates of A and B are (6,-4) and (-2,2) respectively?
 A. (-7,-4) B. (7,4)
 C. (7,-4) D. (-7,4)

Ans. A

64. What is the slope of the line parallel to the line passing through the points (4,-2) and (-3, 5)?
 A. $3/7$ B. 1
 C. $-3/7$ D. -1

Ans. D

65. At 24% discount the selling price of a washing machine is Rs 38000, what is the selling price if the discount is 40%?
 A. Rs 18000 B. Rs 30000
 C. Rs 22320 D. Rs 31920

Ans. B

66. Dodecahedron has 20 vertices. How many edges does it have?
 A. 30 B. 16
 C. 12 D. 24

Ans. A

67. The diagonal of a square is equal to the side of an equilateral triangle. If the area of the square is $15\sqrt{3}$ sq cm, what is the area of the equilateral triangle?
 A. $45/\sqrt{2}$ sq cm B. $45\sqrt{2}$ sq cm
 C. 45 sq cm D. $45/2$ sq cm

Ans. D

68. If the curved surface area of a right circular cone is 3080 sq cm and its slant height is 35 cm, find its total surface area?
 A. 11088 sq cm B. 1848 sq cm
 C. 5544 sq cm D. 2772 sq cm

Ans. C

69. What is the value of $\operatorname{cosec} 11\pi/6$?
 A. $-2/\sqrt{3}$ B. $\sqrt{2}$
 C. -2 D. $-\sqrt{2}$

Ans. C

70. $-\cos(A + B) + \cos(A - B)$ is equal to
 A. $2\cos A \cos B$ B. $2\sin A \sin B$
 C. $2\sin A \cos B$ D. $2\cos A \sin B$

Ans. A

71. $-1 / (\tan A + \cot A)$ is equal to
 A. $(\operatorname{cosec} A + \sin A)(\sec A - \cos A)$
 B. $\sqrt{[(\operatorname{cosec} A - \sin A)(\sec A - \cos A)]}$
 C. $\sqrt{[(\operatorname{cosec} A + \sin A)(\sec A - \cos A)]}$
 D. $(\operatorname{cosec} A - \sin A)(\sec A - \cos A)$

Ans. A

72. Refer the below data table and answer the following Question.

	Weight (kg) वजन (किलोग्राम)	Height in meter ऊँचाई (मीटर)
Aruna / अरुणा	79	1.61
Arushi / अरुशी	52	1.68
Arya / आर्य	52	1.5
Asha / आशा	53	1.63

Who has the least weight to height ratio?

- A. Aruna B. Arushi
 C. Arya D. Asha

Ans. B

73. Refer the below data table and answer the following Question.

Year वर्ष	Company's % Profit कंपनी का लाभ %
2011	25
2012	5
2013	10
2014	15
2015	20

What was the Revenue of the company if its Expenditure was Rs. 575 crore in the year when its % profit was the least?

- A. 632.5 B. 603.75
C. 661.25 D. 575

Ans. B

74. The following table shows the number of children in each house of a society.

Number of Children बच्चों की संख्या	Number of Houses घरों की संख्या
0	4
1	13
2	17
3	5

What is the average number of children per house?

- A. 2.09 B. 1.84
C. 1.59 D. 1.34

Ans. C

75. Refer the below data table and answer the following Question.

Partners भागीदार	Present % share वर्तमान % हिस्सा
Anand / आनंद	10
Basu / बासु	5
Chinmay / चिन्मय	30
Dhiraj / धीरज	5
Ejaz / एजाज़	50

If the company has issued six lakh shares between its five partners and if Chinmay offers to sell 15,000 of his shares to Dhiraj, then Dhiraj will have how many shares?

- A. 45000 shares B. 30000 shares
C. 60000 shares D. 15000 shares

Ans. A

76. In the following question, the sentence given with blank to be filled in with an appropriate word. Select the correct alternative out of the four and indicate it by selecting the appropriate option.

The lawyer tried to _____ his client to accept the generous settlement offer.

- A. draw B. seduce
C. incite D. persuade

Ans. D

77. Improve the bracketed part of the sentence.

The stranded pilgrims (had waited) in the bitter cold for more than two hours now.

- A. has been waiting
B. have been waiting
C. have waited
D. no improvement

Ans. B

78. In the following question, some part of the sentence may have errors. Find out which part of the sentence has an error and select the appropriate option. If a sentence is free from error, select 'No Error'.

I am coming directly(A)/to my office(B)/from the station.(C)/No error(D)

- A. B B. A
C. C D. D

Ans. A

79. Improve the bracketed part of the sentence.

The exhausted travellers seemed relieved when the train finally (came into) the station.

- A. pulled in B. pulled into
C. pulled onto D. no improvement

Ans. A

80. Rearrange the parts of the sentence in correct order.

It is for the government, P-especially one with such a Q-significant majority, to have the R-intelligence and leadership to think long term

- A. QRP B. PQR
C. RPQ D. QPR

Ans. B

81. In the following question, out of the four alternatives, select the alternative which best expresses the meaning of the idiom/phrase.

to drink like a fish Options:

- A. a person who spends a lot
B. a person who keeps cheating for a very long time without getting noticed
C. a person who needs to relive himself very frequently
D. to drink excessive amounts of alcohol

Ans. D

82. Rearrange the parts of the sentence in correct order.
 There is a deeper
 P-fissure here that goes
 Q-from western theory
 R-beyond explanations
 A. PRQ B. PQR
 C. QPR D. RPQ
 Ans. A
83. Select the synonym of
 to preside
 A. to acquiesce B. to concur
 C. to officiate D. to accord
 Ans. C
84. Select the synonym of
 dabble
 A. solemn B. austere
 C. meditative D. dally
 Ans. D
85. In the following question, a sentence has been given in Active/Passive voice. Out of four alternatives suggested, select the one, which best expresses the same sentence in Passive/Active voice.
 The owners remodelled the car to help it sell.
 A. The car was remodelled by the owners to help it sell.
 B. The car is being remodelled by the owners to help it sell.
 C. The car was remodelled by the owners to help it being sold.
 D. The car is being remodelled by the owners to help it being sold.
 Ans. A
86. Select the word with the correct spelling.
 A. thresonical B. numeracy
 C. nepotism D. tolerate
 Ans. B
87. In the following question, out of the four alternatives, select the alternative which is the best substitute of the phrase.
 A person who is lazy and has low standards of cleanliness.
 A. hog B. slob
 C. swine D. brute
 Ans. B
88. Select the antonym of
 therapeutic
 A. ameliorative B. analeptic
 C. salubrious D. inimical
 Ans. D
89. Select the antonym of
 to perpetuate
 A. to eternize B. to canonize
 C. to cease D. to bolster
 Ans. C
90. In the following question, some part of the sentence may have errors. Find out which part of the sentence has an error and select the appropriate option. If a sentence is free from error, select 'No Error'.
 The task of(A)/writing a
 autobiography(B)/is a difficult one.(C)/No
 error(D)
 A. A B. B
 C. C D. D
 Ans. B
91. In the following question, out of the four alternatives, select the alternative which best expresses the meaning of the idiom/phrase.
 down to the wire
 A. removing the bondage that is keeping one down
 B. the last second before the bomb explodes
 C. to denote a situation whose outcome is not decided until the very last minute
 D. finishing all of one's resources to the last penny
 Ans. C
92. In the following question, a sentence has been given in Direct/Indirect speech. Out of the four alternatives suggested, select the one, which best express the same sentence in Indirect/Direct speech.
 Manoj said, "I must go now."
 A. Manoj said that he must go then.
 B. Manoj said that he must go than.
 C. Manoj said he has to go then.
 D. Manoj said that he should be going than.
 Ans. A
93. In the following question, out of the four alternatives, select the alternative which is the best substitute of the phrase.
 To exclude from a society or group.
 A. to ostracise B. to deport
 C. to boycott D. to snub
 Ans. A
94. Select the word with the correct spelling.
 A. glucose B. hermetec
 C. wigling D. derogate
 Ans. A

95. In the following question, sentence given with blank is to be filled in with an appropriate word. Select the correct alternative out of the four and indicate it by selecting the appropriate option.

If immigrants don't learn to speak the native languages of their new countries, they won't be able to _____ themselves into society.

- A. conjoin B. interface
C. integrate D. reconcile

Ans. C

96. In the following passage, some of the words have been left out. Read the passage carefully and select the correct answer for the given blank out of the four alternatives.

_____ the Troubled Asset Relief Program (TARP), the government had purchased assets of struggling banks with a view _____ ensuring that they did not collapse taking _____ them the rest of the financial system. These assets _____ later at a profit by the government! The U.S. government had acted smartly, while in the Indian case the banks now find themselves _____ with loans made by them to an individual with negative net worth.

the Troubled Asset Relief Program (TARP)

- A. Below B. Down
C. Lower D. Under

Ans. D

97. In the following passage, some of the words have been left out. Read the passage carefully and select the correct answer for the given blank out of the four alternatives.

_____ the Troubled Asset Relief Program (TARP), the government had purchased assets of struggling banks with a view _____ ensuring that they did not collapse taking _____ them the rest of the financial system. These assets _____ later at a profit by the government! The U.S. government had acted smartly, while in the Indian case the banks now find themselves _____ with loans made by them to an individual with negative net worth.

(TARP), the government had purchased assets of struggling banks with a view

- A. to B. of
C. for D. so

Ans. A

98. In the following passage, some of the words have been left out. Read the passage carefully and select the correct answer for the given blank out of the four alternatives.

_____ the Troubled Asset Relief Program (TARP), the government had

purchased assets of struggling banks with a view _____ ensuring that they did not collapse taking _____ them the rest of the financial system. These assets _____ later at a profit by the government! The U.S. government had acted smartly, while in the Indian case the banks now find themselves _____ with loans made by them to an individual with negative net worth.

they did not collapse taking _____ them the rest of the financial system.

- A. from B. all
C. along with D. also with

Ans. C

99. In the following passage, some of the words have been left out. Read the passage carefully and select the correct answer for the given blank out of the four alternatives.

_____ the Troubled Asset Relief Program (TARP), the government had purchased assets of struggling banks with a view _____ ensuring that they did not collapse taking _____ them the rest of the financial system. These assets _____ later at a profit by the government! The U.S. government had acted smartly, while in the Indian case the banks now find themselves _____ with loans made by them to an individual with negative net worth.

These assets later at a profit by the government!

- A. are disposed of
B. were disposed of
C. are disposed off
D. had been disposed off

Ans. B

100. In the following passage, some of the words have been left out. Read the passage carefully and select the correct answer for the given blank out of the four alternatives.

_____ the Troubled Asset Relief Program (TARP), the government had purchased assets of struggling banks with a view _____ ensuring that they did not collapse taking _____ them the rest of the financial system. These assets _____ later at a profit by the government! The U.S. government had acted smartly, while in the Indian case the banks now find themselves _____ with loans made by them to an individual with negative net worth.

find themselves _____ with loans made by them to an individual with negative net worth.

- A. saddled B. baffled
C. puzzled D. caught

Ans. A