

SSC CHSL

Previous Year Paper
2021
(Held on: 24 May 2022 Shift 3)
English

www.freshersnow.com

Combined Higher Secondary Level Examination 2021 Tier I

Roll Number	
Candidate Name	
Venue Name	
Exam Date	24/05/2022
Exam Time	4:00 PM - 5:00 PM
Subject	CHSL 2021 Tier I

Section : English Language

Q.1 The following sentence has been split into four segments. Identify the segment that contains a grammatical error.

Rahul sings / very sweet / when he is / in a good mood.

- Ans 1. very sweet
 2. when he is
 3. in a good mood
 4. Rahul sings

Question ID : 26433039683
Status : Answered
Chosen Option : 1

Q.2 Select the most appropriate option to fill in the blank.
My grandfather was a farmer and he _____ three acres of land.

- Ans 1. cultivated
 2. advanced
 3. grown
 4. cultured

Question ID : 26433045417
Status : Answered
Chosen Option : 1

Q.3 Select the most appropriate meaning of the given idiom.
Lose your touch

- Ans 1. Doing someone a favour in hopes that the favour will be returned
 2. To be passed from one person to another
 3. Not being as successful as previously
 4. Something being very difficult to find

Question ID : 26433043138
Status : Answered
Chosen Option : 3

Q.4 The following sentence has been split into four segments. Identify the segment that contains a grammatical error.

She had resign / from the / post before / he apologised.

- Ans 1. She had resign
 2. he apologised
 3. post before
 4. from the

Question ID : 26433039734
Status : Answered
Chosen Option : 1

Q.5 Select the most appropriate synonym of the given word.
Bafflement

- Ans 1. Confusion
 2. Pleasure
 3. Clarity
 4. Cleanliness

Question ID : 26433039777
Status : Answered
Chosen Option : 1

Q.6 Select the most appropriate ANTONYM of the given word.
Praise

- Ans 1. celebrate
 2. Condemn
 3. hail
 4. Secure

Question ID : 26433042922
Status : Answered
Chosen Option : 2

Q.7 Select the most appropriate option that can substitute the underlined segment in the given sentence.
We want to divide the expenses between the three of us.

- Ans 1. at
 2. among
 3. from
 4. for

Question ID : 26433039696
Status : Answered
Chosen Option : 2

Q.8 Select the most appropriate meaning of the given idiom.
At one's elbow

- Ans 1. Next to someone
 2. Far away
 3. Strong grip
 4. Strong bond

Question ID : 26433043123
Status : Answered
Chosen Option : 3

Q.9 Select the most appropriate synonym of the given word.
Confront

- Ans 1. Mingle
 2. Conceal
 3. Challenge
 4. Scheme

Question ID : 26433039836
Status : Answered
Chosen Option : 3

Q.10 The following sentence has been split into four segments. Identify the segment that contains a grammatical error.

After / a long and fun-filled day, / the children / slept themselves peacefully.

- Ans
- 1. a long and fun-filled day
 - 2. slept themselves peacefully
 - 3. the children
 - 4. After

Question ID : 26433040041
Status : Answered
Chosen Option : 2

Q.11 Select the INCORRECTLY spelt word.

- Ans
- 1. Laxurious
 - 2. Innocent
 - 3. Zealous
 - 4. Judicial

Question ID : 26433039796
Status : Answered
Chosen Option : 1

Q.12 Select the option that can be used as a one-word substitute for the underlined group of words

Geeta is doubtful about getting hired as she is inexperienced at this job.

- Ans
- 1. Professional
 - 2. Expert
 - 3. Ace
 - 4. Novice

Question ID : 26433045577
Status : Answered
Chosen Option : 4

Q.13 Parts of a sentence are given below in jumbled order. Arrange the parts in the correct order to form a meaningful sentence.

- a) is credited with saying
- b) do not dry your feet
- c) If you want to leave your footprint on the sands of time,
- d) Dr. APJ Abdul Kalam, former President of India

- Ans
- 1. d,c,a,b
 - 2. d,a,c,b
 - 3. c,a,b,d
 - 4. a,b,c,d,

Question ID : 26433039889
Status : Answered
Chosen Option : 2

Q.14 Select the **INCORRECTLY** spelt word.

- Ans 1. Arguement
 2. Performance
 3. Valuable
 4. Secretary

Question ID : 26433039860
Status : Answered
Chosen Option : 1

Q.15 Select the most appropriate option to fill in the blank.

The writer declares that _____ children of their childhood is a criminal act.

- Ans 1. robbing
 2. robbed
 3. rob
 4. to rob

Question ID : 26433039928
Status : Answered
Chosen Option : 1

Q.16 Select the most appropriate **ANTONYM** of the given word.

Detrimental

- Ans 1. Baseless
 2. Harmless
 3. Senseless
 4. Meaningless

Question ID : 26433043067
Status : Answered
Chosen Option : 2

Q.17 Select the most appropriate meaning of the given idiom.

Blow up

- Ans 1. To suffice
 2. To live up greatly
 3. To destroy by an explosion
 4. To stand upright

Question ID : 26433042935
Status : Answered
Chosen Option : 3

Q.18 Select the most appropriate **ANTONYM** of the given word.

Dwarf

- Ans 1. Measurable
 2. Medium
 3. Tiny
 4. Giant

Question ID : 26433043069
Status : Answered
Chosen Option : 4

Q.19 From among the words given in bold, select the **INCORRECTLY** spelt word in the following sentence.
Small drops trickled down the red and yellow tassels of canopies and dampened the heads of little boys.

Ans 1. canopies

2. tassels

3. dampened

4. trickled

Question ID : 26433043167

Status : Answered

Chosen Option : 2

Q.20 In the following passage, some words have been deleted. Read the passage carefully and select the most appropriate option to fill in each blank.

When we believe that our mind is thinking _____ thoughts at the same time, what actually is happening is that _____ thoughts are _____ in such quick _____ so as to seem simultaneous

Ans 1. homogenous, measurable, unchanging, velocity

2. challenging, limited, fixed, interruption

3. multiple, myriad, alternating, succession

4. uniform, countable, altering, ramification

Question ID : 26433045606

Status : Answered

Chosen Option : 4

Comprehension:

In the following passage, some words have been deleted. Read the passage carefully and select the most appropriate option to fill in each blank.

Competition is a necessary prospect for (1) _____ individuals with particular qualities, but only those who can (2) _____ their minds to work, work hard every day, and prove themselves will be able to (3) _____ this arduous battle. It's a never-ending race to the finish line, and only those who put in the effort and dedication will make it to the end. The outcome of any exam does not (4) _____ on the last day, during your paper — your success is ensured with every morning that you put in work. Students must be aware of the tough environment they are entering and prepare (5) _____ in order to improve their chances.

SubQuestion No : 21

Q.21 Select the most appropriate option to fill in blank number 1.

Ans 1. distinguished

2. distinguishes

3. distinguishing

4. distinguish

Question ID : 26433045851

Status : Answered

Chosen Option : 3

Comprehension:

In the following passage, some words have been deleted. Read the passage carefully and select the most appropriate option to fill in each blank.

Competition is a necessary prospect for (1)_____ individuals with particular qualities, but only those who can (2)_____ their minds to work, work hard every day, and prove themselves will be able to (3)_____ this arduous battle. It's a never-ending race to the finish line, and only those who put in the effort and dedication will make it to the end. The outcome of any exam does not (4)_____ on the last day, during your paper — your success is ensured with every morning that you put in work. Students must be aware of the tough environment they are entering and prepare (5)_____ in order to improve their chances.

SubQuestion No : 22

Q.22 Select the most appropriate option to fill in blank number 2.

- Ans
- 1. get
 - 2. divert
 - 3. made
 - 4. put

Question ID : 26433045852

Status : Answered

Chosen Option : 1

Comprehension:

In the following passage, some words have been deleted. Read the passage carefully and select the most appropriate option to fill in each blank.

Competition is a necessary prospect for (1)_____ individuals with particular qualities, but only those who can (2)_____ their minds to work, work hard every day, and prove themselves will be able to (3)_____ this arduous battle. It's a never-ending race to the finish line, and only those who put in the effort and dedication will make it to the end. The outcome of any exam does not (4)_____ on the last day, during your paper — your success is ensured with every morning that you put in work. Students must be aware of the tough environment they are entering and prepare (5)_____ in order to improve their chances.

SubQuestion No : 23

Q.23 Select the most appropriate option to fill in blank number 3.

- Ans
- 1. overcome
 - 2. overload
 - 3. overpaid
 - 4. overjoyed

Question ID : 26433045853

Status : Answered

Chosen Option : 1

Comprehension:

In the following passage, some words have been deleted. Read the passage carefully and select the most appropriate option to fill in each blank.

Competition is a necessary prospect for (1)_____ individuals with particular qualities, but only those who can (2)_____ their minds to work, work hard every day, and prove themselves will be able to (3)_____ this arduous battle. It's a never-ending race to the finish line, and only those who put in the effort and dedication will make it to the end. The outcome of any exam does not (4)_____ on the last day, during your paper — your success is ensured with every morning that you put in work. Students must be aware of the tough environment they are entering and prepare (5)_____ in order to improve their chances.

SubQuestion No : 24

Q.24 Select the most appropriate option to fill in blank number 4.

- Ans 1. awake
 2. arise
 3. arrive
 4. abase

Question ID : 26433045854

Status : Answered

Chosen Option : 3

Comprehension:

In the following passage, some words have been deleted. Read the passage carefully and select the most appropriate option to fill in each blank.

Competition is a necessary prospect for (1)_____ individuals with particular qualities, but only those who can (2)_____ their minds to work, work hard every day, and prove themselves will be able to (3)_____ this arduous battle. It's a never-ending race to the finish line, and only those who put in the effort and dedication will make it to the end. The outcome of any exam does not (4)_____ on the last day, during your paper — your success is ensured with every morning that you put in work. Students must be aware of the tough environment they are entering and prepare (5)_____ in order to improve their chances.

SubQuestion No : 25

Q.25 Select the most appropriate option to fill in blank number 5.

- Ans 1. reluctantly
 2. consequently
 3. accordingly
 4. exponentially

Question ID : 26433045855

Status : Answered

Chosen Option : 3

Section : General Intelligence

**Q.1 Which of the following numbers will replace the question mark (?) in the given series?
 15, 27, 12, ?, 9, 33**

- Ans 1. 29
 2. 18
 3. 26
 4. 30

Question ID : 26433040582

Status : Answered

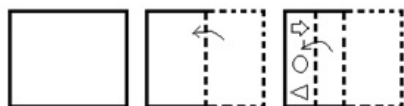
Chosen Option : 4

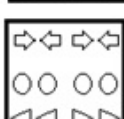
Q.2 Which of the following numbers will replace the question mark (?) in the given series?
13,14,23,48,97,178,?

- Ans
- 1. 259
 - 2. 278
 - 3. 269
 - 4. 299

Question ID : 26433043276
Status : Answered
Chosen Option : 4

Q.3 A paper is folded and cut as shown below. How will it appear when unfolded?



- Ans
- 1. 
 - 2. 
 - 3. 
 - 4. 

Question ID : 26433044960
Status : Answered
Chosen Option : 2

Q.4 Study the given pattern carefully and select the number that can replace the question mark (?) in it.

First row- 3, 43, 4

Second row- 6, 241, 5

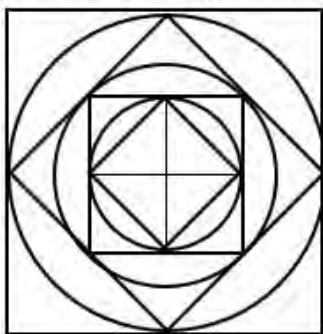
Third row- 2, ?, 11

(NOTE: Operations should be performed on the whole numbers, without breaking down the numbers into its constituent digits. E.g. 13 – Operations on 13 such as adding /deleting /multiplying etc. to 13 can be performed. Breaking down 13 into 1 and 3 and then performing mathematical operations on 1 and 3 is NOT allowed)

- Ans
- 1. 173
 - 2. 192
 - 3. 137
 - 4. 129

Question ID : 26433045258
Status : Answered
Chosen Option : 4

Q.5 How many triangles are there in the given figure?



- Ans
- 1. 22
 - 2. 24
 - 3. 20
 - 4. 18

Question ID : 26433040533
 Status : Answered
 Chosen Option : 1

Q.6 Select the option that is related to the third term in the same way as the second term is related to the first term and the sixth term is related to the fifth term.
 $16 : 69 :: 24 : ? :: 31 : 144$

- Ans
- 1. 109
 - 2. 121
 - 3. 116
 - 4. 105

Question ID : 26433045041
 Status : Answered
 Chosen Option : 1

Q.7 Which letter cluster will replace the question mark (?) to complete the given series?
 WFBI, UCWB, SZRU, ?

- Ans
- 1. QWMN
 - 2. QXNN
 - 3. QWNN
 - 4. QXMN

Question ID : 26433043515
 Status : Answered
 Chosen Option : 1

Q.8 The second number in the given number pairs is obtained by performing certain mathematical operation(s) on the first number. The same operation(s) are followed in all the number pairs except one. Find that odd number pair.

- Ans
- 1. 16:1024
 - 2. 14:784
 - 3. 18:1620
 - 4. 12:576

Question ID : 26433043583
 Status : Answered
 Chosen Option : 3

Q.9 If A denotes '+', B denotes '×', C denotes '-' and D denotes '÷', then what will come in place of '?' in the following equation?

(13 B 9) D 3 A (14 D 7) B 6 C 21 A (32 B 2) = ?

- Ans
- 1. 96
 - 2. 100
 - 3. 112
 - 4. 94

Question ID : 26433043367

Status : Answered

Chosen Option : 4

Q.10 Which of the following numbers will replace the question mark (?) in the given series?

19, 38, 35, ?, 135, 810

- Ans
- 1. 146
 - 2. 142
 - 3. 137
 - 4. 140

Question ID : 26433040577

Status : Answered

Chosen Option : 4

Q.11 Select the option that is related to the fifth term in the same way as the second term is related to the first term and the fourth term is related to the third term.

NUMBER : UNNYRE :: MOTHER : OMGRE :: FINGER : ?

- Ans
- 1. IFDHRE
 - 2. IFGNRE
 - 3. IFMTRE
 - 4. IFTMRE

Question ID : 26433043249

Status : Answered

Chosen Option : 3

Q.12 In a certain code language, 'ADVISORY' is written as 'BFYMRMOU', and 'CHAMPION' is written as 'DJDQOGLJ'. How will 'DESIGNER' be written in that language?

- Ans
- 1. EGVNFLCN
 - 2. EGUMFCN
 - 3. EGVMFLBN
 - 4. EGVNFLBN

Question ID : 26433039308

Status : Answered

Chosen Option : 3

Q.13 Select the option that is related to the fifth number in the same way as the second number is related to the first number and the fourth number is related to the third number.

24 : -192 :: -31 : 248 :: -18 : ?

- Ans
- 1. -152
 - 2. -146
 - 3. 148
 - 4. 144

Question ID : 26433043302
 Status : Answered
 Chosen Option : 4

Q.14 Select the correct mirror image of the given combination when the mirror is placed at XY as shown.

X
 9 P 7 N 5 L |
 Y

- Ans
- 1. I 2 N 7 P 9
 - 2. I 5 N 7 P 9
 - 3. I 2 N 7 P 9
 - 4. I 9 7 N 5 L

Question ID : 26433040499
 Status : Answered
 Chosen Option : 1

Q.15 Which of the following letter-clusters will replace the question mark (?) in the given series to make it logically complete?
 WVE, UTG, SRI, QPK, ?

- Ans
- 1. MON
 - 2. MNO
 - 3. NMO
 - 4. ONM

Question ID : 26433045156
 Status : Answered
 Chosen Option : 4

Q.16 Select the correct mirror image of the given combination when the mirror is placed at MN as shown.

M
 t h 8 2 k 3 |
 N

- Ans
- 1. 3 k 2 8 h t
 - 2. 3 k 2 8 h t
 - 3. 3 k 2 8 h t
 - 4. 3 k 2 8 h t

Question ID : 26433040558
 Status : Answered
 Chosen Option : 1

Q.17 In a certain code language, 'KITCHEN' is written as 'LHUBIDO', and 'HUSBAND' is written as 'ITTABME'. How will 'ELEMENT' be written in that language?

- Ans 1. FKFLFMU
 2. FKFLFNU
 3. FJFLGNV
 4. FKGLFNU

Question ID : 26433039302
Status : Answered
Chosen Option : 1

Q.18 In a certain code language, "FAMOUS" is written as "AFOMSU", and "FINGER" is written as "IFGNRE". How will "INVEST" be written in that language?

- Ans 1. NIVETS
 2. NEIVTS
 3. NIEVST
 4. NIEVTS

Question ID : 26433043485
Status : Answered
Chosen Option : 4

Q.19 Three statements are given, followed by three conclusions numbered I, II and III. Assuming the statements to be true, even if they seem to be at variance with commonly known facts, decide which of the conclusions logically follow(s) from the statements.

Statements:

Some butters are honeys.

Some honeys are breads.

All breads are jams.

Conclusions:

I. Some jams are honeys.

II. All honeys are butters.

III. Some jams are butters.

- Ans 1. Only conclusions I and II follow
 2. Only conclusion II follows
 3. Only conclusions I and III follow
 4. Only conclusion I follows

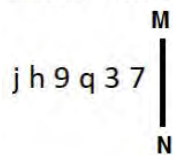
Question ID : 26433040741
Status : Answered
Chosen Option : 4

Q.20 If 21st June 2007 was a Thursday, then what was the day of the week on 21st June 2011?

- Ans 1. Wednesday
 2. Monday
 3. Sunday
 4. Tuesday

Question ID : 26433040440
Status : Answered
Chosen Option : 4

Q.21 Select the correct mirror image of the given combination when the mirror is placed at MN as shown.



- Ans
- 1. $\nabla \epsilon p e d j$
 - 2. $\angle \epsilon b 6 y f$
 - 3. $\angle \epsilon b e d j$
 - 4. $\angle \epsilon b e d f$

Question ID : 26433040545
 Status : Answered
 Chosen Option : 1

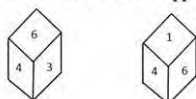
Q.22 Select the option that represents the correct order of the given words as they would appear in an English dictionary.

1. Adequate
2. Adoption
3. Addiction
4. Abduction
5. Advertisement

- Ans
- 1. 4,3,1,2,5
 - 2. 3,2,4,1,5
 - 3. 3,1,4,2,5
 - 4. 4,2,1,3,5

Question ID : 26433040361
 Status : Answered
 Chosen Option : 1

Q.23 Two different positions of the same dice are shown, the six faces of which are numbered from 1 to 6. Select the number that will be on the face opposite to the one showing '3'.



- Ans
- 1. 4
 - 2. 1
 - 3. 6
 - 4. 2

Question ID : 26433040402
 Status : Answered
 Chosen Option : 2

Q.24 Study the given pattern carefully and select the number that can replace the question mark (?) in it.

First row- 9, 21, 124

Second row- 11, 25, 148

Third row- 17, ?, 220

(NOTE: Operations should be performed on the whole numbers, without breaking down the numbers into its constituent digits. E.g. 13 – Operations on 13 such as adding /deleting /multiplying etc. to 13 can be performed. Breaking down 13 into 1 and 3 and then performing mathematical operations on 1 and 3 is NOT allowed)

Ans 1. 34

2. 30

3. 35

4. 37

Question ID : 26433045250

Status : Answered

Chosen Option : 4

Q.25 The second number in the given number pairs is obtained by performing certain mathematical operation(s) on the first number. The same operation(s) are followed in all the number pairs, EXCEPT one. Find that odd number pair.

Ans 1. 361 : 332

2. 533 : 504

3. 440 : 411

4. 520 : 481

Question ID : 26433040660

Status : Answered

Chosen Option : 4

Section : Quantitative Aptitude

Q.1 The value of

$$(4^3 + 4) \div [5^2 - (7^2 - 41)] \text{ is:}$$

Ans 1. 8

2. 17

3. 5

4. 4

Question ID : 26433038609

Status : Answered

Chosen Option : 4

Q.2 The fourth proportional to the numbers 5, 6 and 8 is:

Ans 1. 9.8

2. 9.6

3. 9

4. 9.5

Question ID : 26433041589

Status : Answered

Chosen Option : 2

Q.3 To pack a set of books, Gautam got cartons of a certain height that were 48 inches long and 27 inches wide. If the volume of such a carton was 22.5 cubic feet, what was the height of each carton? [Use 1 foot = 12 inches.]

- Ans
- 1. 36 inches
 - 2. 32.5 inches
 - 3. 30 inches
 - 4. 32 inches

Question ID : 26433043972

Status : Answered

Chosen Option : 3

Q.4 5 kg of ₹18 per kg wheat is mixed with 2 kg of another type of wheat to get a mixture costing ₹20 per kg. Find the price (per kg) of the costlier wheat.

- Ans
- 1. ₹27
 - 2. ₹25
 - 3. ₹29
 - 4. ₹30

Question ID : 26433042685

Status : Answered

Chosen Option : 2

Q.5 If $\cot 75^\circ = 2 - \sqrt{3}$. Find the value of $\cot 15^\circ$.

- Ans
- 1. $2 - \sqrt{3}$
 - 2. $2 + \sqrt{3}$
 - 3. $\sqrt{3} + 1$
 - 4. $\sqrt{3} - 1$

Question ID : 26433044326

Status : Answered

Chosen Option : 2

Q.6 In a government scheme, if an electricity bill is paid before the due date, one gets a reduction of 5% on the amount of the bill. By paying the bill before the due date, a person got a reduction of ₹20. The amount of his electricity bill was:

- Ans
- 1. ₹440
 - 2. ₹400
 - 3. ₹520
 - 4. ₹420

Question ID : 26433042479

Status : Answered

Chosen Option : 2

Q.7 A shopkeeper earns a profit of 12% on selling a book at 10% discount on the printed price. The ratio of the cost price to the printed price is:

- Ans
- 1. 38 : 55
 - 2. 45 : 56
 - 3. 55 : 38
 - 4. 56 : 45

Question ID : 26433042384
Status : Answered
Chosen Option : 2

Q.8 A thief was spotted by a policeman from a distance of 225 metres. When the policeman started the chase, the thief also started running. If the speed of the thief was 11 km/h and that of the policeman was 13 km/h, how far would the thief have run, before the policeman caught up with him?

- Ans
- 1. 1237.5 metres
 - 2. 1137.5 metres
 - 3. 1357.5 metres
 - 4. 1256.5 metres

Question ID : 26433042618
Status : Answered
Chosen Option : 1

Q.9 Which of the following is divisible by 3?

- Ans
- 1. 7345932
 - 2. 5439763
 - 3. 3642589
 - 4. 3262735

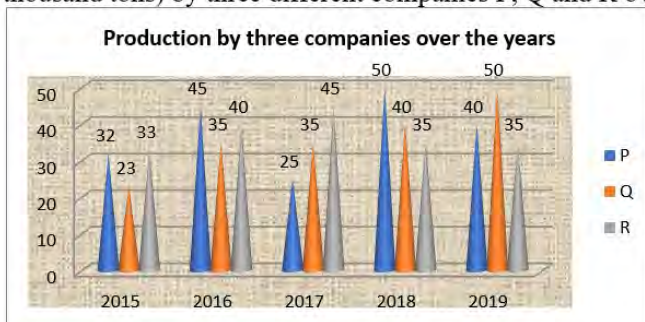
Question ID : 26433042679
Status : Answered
Chosen Option : 1

Q.10 At a certain rate of interest compounded annually, a sum amounts to ₹10,890 in 2 years and to ₹11,979 in 3 years. The sum is:

- Ans
- 1. ₹9,000
 - 2. ₹8,000
 - 3. ₹8,500
 - 4. ₹9,500

Question ID : 26433041429
Status : Answered
Chosen Option : 1

- Q.11** The following graph shows the data of the production of electric wire (in thousand tons) by three different companies P, Q and R over the years.



What is the ratio of the average production of Company P in the period 2017-2019 to the average production of Company Q in the same period?

- Ans**
- 1. 4 : 5
 - 2. 25 : 23
 - 3. 23 : 25
 - 4. 5 : 4

Question ID : 26433042402
Status : Answered
Chosen Option : 3

- Q.12** The following pie chart shows the different coloured dresses worn by 60 students in a college party. Study the pie chart and answer the question that follows.



The number of students who wore yellow coloured dress (sector which represents 10%) is:

- Ans**
- 1. 20
 - 2. 10
 - 3. 6
 - 4. 12

Question ID : 26433045943
Status : Answered
Chosen Option : 3

- Q.13** In a class, there are 39 students and their average weight is 51 kg. If we include the weight of the teacher, then the average weight becomes 51.2 kg. What is the weight of the teacher?

- Ans**
- 1. 53 kg
 - 2. 59 kg
 - 3. 57 kg
 - 4. 51 kg

Question ID : 26433041516
Status : Answered
Chosen Option : 2

Q.14 A sum of money becomes ₹ 3,364 at a rate of 16% compounded annually for 2 years.
The sum of money is:

- Ans 1. ₹2,500
 2. ₹1,800
 3. ₹3,800
 4. ₹2,200

Question ID : 26433044108
 Status : Answered
 Chosen Option : 1

Q.15 If the surface area of a sphere is 1386 cm^2 , then find the radius of the sphere.

- Ans 1. 12.5 cm
 2. 10.5 cm
 3. 10 cm
 4. 12 cm

Question ID : 26433044057
 Status : Answered
 Chosen Option : 2

Q.16 If the numerator of a fraction be increased by 50% and its denominator be diminished by 28%, the value of the fraction is $\frac{25}{36}$. Find the original fraction.

- Ans 1. $\frac{1}{5}$
 2. $\frac{2}{3}$
 3. $\frac{2}{5}$
 4. $\frac{1}{3}$

Question ID : 26433042690
 Status : Answered
 Chosen Option : 4

Q.17 Simplify $(957 + 932)^2 - 4 \times 957 \times 932$.

- Ans 1. 576
 2. 676
 3. 529
 4. 625

Question ID : 26433039268
 Status : Answered
 Chosen Option : 4

Q.18 If the surface area of a sphere is $64\pi\text{ cm}^2$, then the volume of the sphere is:

- Ans
- 1. $\frac{241}{3}\pi\text{ cm}^3$
 - 2. $\frac{251}{5}\pi\text{ cm}^3$
 - 3. $\frac{226}{3}\pi\text{ cm}^3$
 - 4. $\frac{256}{3}\pi\text{ cm}^3$

Question ID : 26433044126
 Status : Answered
 Chosen Option : 4

Q.19 On reducing the marked price of his goods by ₹28, a shopkeeper gains 20%. If the cost price of the article be ₹560 and it is sold at the marked price, what will be the gain per cent?

- Ans
- 1. 30%
 - 2. 25%
 - 3. 20%
 - 4. 15%

Question ID : 26433038860
 Status : Answered
 Chosen Option : 2

Q.20 If $x + \frac{1}{x} = -2\sqrt{3}$, what is the value of $x^5 + \frac{1}{x^5}$?

- Ans
- 1. $-178\sqrt{3}$
 - 2. $-182\sqrt{3}$
 - 3. $182\sqrt{3}$
 - 4. $-180\sqrt{3}$

Question ID : 26433044335
 Status : Answered
 Chosen Option : 1

Q.21 Avi and Bindu can complete a project in four and twelve hours, respectively. Avi begins project at 5 a.m., and they work alternately for one hour each. When will the project be completed?

- Ans
- 1. 9 a.m.
 - 2. 11 a.m.
 - 3. 1 p.m.
 - 4. 10 a.m.

Question ID : 26433044050
 Status : Answered
 Chosen Option : 2

Q.22 Two circles having radii 12 cm and 8 cm, respectively, touch each other externally. A common tangent is drawn to these circles which touch the circles at M and N, respectively. What is the length (in cm) of MN?

- Ans
- 1. $8\sqrt{8}$
 - 2. $8\sqrt{6}$
 - 3. $6\sqrt{8}$
 - 4. $6\sqrt{6}$

Question ID : 26433038649
 Status : Answered
 Chosen Option : 2

Q.23 If $a+2b=27$ and $a^3 + 8b^3 = 5427$, then find the value of $2ab$.

- Ans
- 1. 176
 - 2. 156
 - 3. 172
 - 4. 149

Question ID : 26433041353
 Status : Answered
 Chosen Option : 1

Q.24 The following table gives the sales of an electronic chip over 5 years. Find the year in which the sales are equal to the average of the sales over the 5 years.

Year	2015	2016	2017	2018	2019
Sales (in thousands of rupees)	45	54	57	60	69

- Ans
- 1. 2018
 - 2. 2015
 - 3. 2017
 - 4. 2016

Question ID : 26433044240
 Status : Answered
 Chosen Option : 3

Q.25 In an election between two candidates, 80% of the eligible voters cast their votes, 5% of the votes cast were declared invalid. A candidate got 10545 votes, which were 75% of the total valid votes. Find the total number of eligible voters.

- Ans
- 1. 17800
 - 2. 18500
 - 3. 18250
 - 4. 18000

Question ID : 26433044276
 Status : Answered
 Chosen Option : 2

Q.1 In which year was the National Biodiversity Authority, a statutory autonomous body, established under the Ministry of Environment and Forests, Government of India?

- Ans
- 1. 2006
 - 2. 2000
 - 3. 2003
 - 4. 2010

Question ID : 26433044770
Status : Not Answered
Chosen Option : --

Q.2 Who won the Major Dhyan Chand Khel Ratna Award 2021 in Para Shooting discipline?

- Ans
- 1. Avani Lekhara
 - 2. Manu Bhaker
 - 3. Gagan Narang
 - 4. Apurvi Chandela

Question ID : 26433041851
Status : Answered
Chosen Option : 1

Q.3 Who among the following won the Tansen Samman 2020?

- Ans
- 1. Manju Mehta
 - 2. Dalchan Sharma
 - 3. Ulhas Kashalkar
 - 4. Satish Vyas

Question ID : 26433044593
Status : Answered
Chosen Option : 4

Q.4 The term 'checkmate' is used in which of the following sports?

- Ans
- 1. Hockey
 - 2. Chess
 - 3. Cricket
 - 4. Badminton

Question ID : 26433044519
Status : Answered
Chosen Option : 2

Q.5 Who among the following received the Sahitya Akademi Award (Non-fiction) for his book 'An Era of Darkness' in 2019?

- Ans
- 1. Shashi Tharoor
 - 2. Cyrus Mistry
 - 3. Jerry Pinto
 - 4. Arun Shourie

Question ID : 26433044669
Status : Answered
Chosen Option : 2

Q.6 Shambhu Maharaj was Awarded the Padma Shri for his contribution to which of the following dances in India?

- Ans 1. Kathak
 2. Bharatanatyam
 3. Kuchipudi
 4. Manipuri

Question ID : 26433041766
Status : Answered
Chosen Option : 1

Q.7 निम्नलिखित में से कौन सा रैकेट से खेला जाने वाला खेल है?

- Ans 1. बेसबॉल
 2. वॉलीबॉल
 3. क्रिकेट
 4. स्कैश

Question ID : 26433042177
Status : Answered
Chosen Option : 1

Q.8 On 21st January 2022, three states observed their 50th Statehood Day, which of the following is NOT one amongst these three?

- Ans 1. Meghalaya
 2. Nagaland
 3. Tripura
 4. Manipur

Question ID : 26433041815
Status : Answered
Chosen Option : 1

Q.9 In optics, the refractive index of a substance is described by the formula $n = c/v$, where c is:

- Ans 1. the speed of light in medium
 2. the centre of curvature
 3. the radius of the sphere
 4. the speed of light in vacuum

Question ID : 26433044806
Status : Answered
Chosen Option : 4

Q.10 Which of the following fields is not offered by Kalidas Samman?

- Ans 1. Classical music
 2. Classical dance
 3. Puppetry
 4. Plastic arts

Question ID : 26433044690
Status : Answered
Chosen Option : 2

Q.11 Which is the largest continental shelf in the world?

- Ans
- 1. The shelf of India
 - 2. The Indian Ocean shelf
 - 3. The shelf in the Pacific Ocean
 - 4. The Siberian shelf in the Arctic Ocean

Question ID : 26433041874

Status : Answered

Chosen Option : 3

Q.12 For a NBFC- MFI, the maximum variance permitted for individual loans between the minimum and maximum interest rate _____.

- Ans
- 1. cannot exceed 4 per cent
 - 2. cannot exceed 2 per cent
 - 3. cannot be less than 2 per cent
 - 4. cannot be less than 4 per cent

Question ID : 26433044535

Status : Not Answered

Chosen Option : --

Q.13 Who among the following was the first woman classical dancer in independent India to be nominated as a member to the Rajya Sabha?

- Ans
- 1. Vidyagauri Adkar
 - 2. Niveditha Arjun
 - 3. Rukmini Devi Arundale
 - 4. Kalamandalam Kalyanikutty Amma

Question ID : 26433038790

Status : Answered

Chosen Option : 4

Q.14 Which French chemist summarised his experiment in 1806, and proved that the mass ratio of elements in a chemical compound is always the same, regardless of the source of the compound?

- Ans
- 1. Joseph Proust
 - 2. Robert Boyle
 - 3. Jacob Berzelius
 - 4. John Dalton

Question ID : 26433044715

Status : Answered

Chosen Option : 1

Q.15 Who among the following is credited with single-handedly making the Santoor a popular classical instrument?

- Ans
- 1. Shiv Kumar Sharma
 - 2. Bhajan Sopori
 - 3. Rahul Sharma
 - 4. Ulhas Bapat

Question ID : 26433041951

Status : Answered

Chosen Option : 1

Q.16 "The State shall not discriminate against any citizen on grounds only of religion, race, caste, sex, place of birth or any of them". This has been incorporated in:

- Ans
- 1. Article 19
 - 2. Article 23
 - 3. Article 15
 - 4. Article 14

Question ID : 26433042098
Status : Answered
Chosen Option : 3

Q.17 EM Subramaniam was an exponent of the _____, a musical instrument.

- Ans
- 1. mandolin
 - 2. guitar
 - 3. ghatam
 - 4. pakhawaj

Question ID : 26433038783
Status : Not Answered
Chosen Option : --

Q.18 Pandit Ravi Shankar, a music legend is famous for which of the following styles of music?

- Ans
- 1. Hindustani classical instrumental
 - 2. Hindustani classical vocal
 - 3. Carnatic classical vocal
 - 4. Carnatic classical instrumental

Question ID : 26433041745
Status : Answered
Chosen Option : 2

Q.19 Which of the following is a limestone cave in India?

- Ans
- 1. Undavalli Caves
 - 2. Varaha Cave
 - 3. Borra Caves
 - 4. Bhimbetka Caves

Question ID : 26433042010
Status : Not Answered
Chosen Option : --

Q.20 Which of the following dancers of Mohiniyattam form of Indian classical dance was given the Devadasi National Award in 2013?

- Ans
- 1. Smitha Rajan
 - 2. Jayaprabha Menon
 - 3. Sunanda Nair
 - 4. Gopika Verma

Question ID : 26433042344
Status : Not Answered
Chosen Option : --

Q.21 निम्नलिखित में से कौन सा संस्मरण हिंदी फिल्मों के प्रसिद्ध क्लासिक भारतीय अभिनेता देव आनंद द्वारा लिखा गया था?

- Ans 1. रोमांसिंग विद लाइफ
 2. दी सब्सटांस एंड दी शैडो
 3. ऑटोबायोग्राफी ऑफ एन एक्टर
 4. कैकिंग द कोड: माई जर्नी इन बॉलीवुड

Question ID : 26433042293
Status : Answered
Chosen Option : 2

Q.22 Find the correct chemical formula of nitromethane.

- Ans 1. CH_3NO
 2. CH_3NO_2
 3. CH_4NO_2
 4. CH_3NO_3

Question ID : 26433039396
Status : Answered
Chosen Option : 2

Q.23 Among the following famous personalities, whose autobiography is 'The Road Ahead'?

- Ans 1. Elon Musk
 2. Bill Gates
 3. Jeff Bezos
 4. Cristiano Ronaldo

Question ID : 26433042216
Status : Not Answered
Chosen Option : --

Q.24 Which of the following is a type of bryophyte that lives in many environments and is characterised by its small, flattened leaves, root-like rhizoids, and peristome?

- Ans 1. Funaria
 2. Ulothrix
 3. Cladophora
 4. Ulva

Question ID : 26433044734
Status : Not Answered
Chosen Option : --

Q.25 Which of the following ministries was held by Dharmendra Pradhan before he became Cabinet Minister of Education, Skill Development and Entrepreneurship in July 2021?

- Ans 1. Ministry of Information and Broadcasting and Sports
 2. Ministry of Food Processing Industries
 3. Ministry of Housing and Urban Development
 4. Ministry of Petroleum and Natural Gas and Steel

Question ID : 26433044392
Status : Answered
Chosen Option : 4